

**Freeware Open  
Source Software  
for OpenVMS**

*VTfm*

---

**The Norton Commander Style  
Video Terminals file manager**

**Release: 2.3-A  
Operating system: HP OpenVMS  
Architectures: VAX, Alpha, Itanium (IA64)**

**Copyright © 1991-2005 VTfm. All rights reserved.  
Vladimir K. Vershinin, [vershinin-vk@tochka.ru](mailto:vershinin-vk@tochka.ru)  
2005, Moscow, Russia**

|  |    |
|--|----|
| <b>1. Introduction</b> .....                                     | 3  |
| 1.1 Current features .....                                       | 3  |
| 1.2 Current restrictions .....                                   | 3  |
| <b>2. Installation</b> .....                                     | 4  |
| 2.1 Terminal settings .....                                      | 4  |
| 2.2 TPU settings .....   | 4  |
| <b>3. VTfm usage</b> .....                                       | 5  |
| 3.1 Navigation through directory panels .....                    | 6  |
| 3.2 FKey <F19> (quick help) .....                                | 8  |
| 3.3 Rotation of directory panels .....                           | 8  |
| 3.4 View file size .....   | 9  |
| 3.5 GotoVMS <F11> (enter to DCL environment) .....               | 10 |
| 3.6 GotoDir <F12> (direct going to some disk directory) .....    | 11 |
| 3.7 View <F13> (view the content of current file) .....          | 16 |
| 3.8 Edit <F14> (edit the existent or create new text file) ..... | 18 |
| 3.9 Find <Find> (filtering files in panels) .....                | 22 |
| 3.10 Select <Ins>, <Sel> (selecting files in panels) .....       | 24 |
| 3.11 UnSelect <Ins>, <Rem> (unselecting files in panels) .....   | 26 |
| 3.12 Copy <Help> (copy a current or selected files) .....        | 28 |
| 3.13 RenMov <Do> (rename/move a current or selected files) ..... | 31 |
| 3.14 Delete <F18> (delete a current or selected files) .....     | 33 |
| 3.15 Mkdir <F17> (make a subdirectory) .....                     | 35 |
| 3.16 Quit <F20> (quit VTfm) .....                                | 36 |
| 3.17 Execute COM and EXE files .....                             | 37 |
| 3.18 Working with command line .....                             | 38 |
| 3.19 Environment file .....                                      | 43 |
| <b>4. VTfm customizing</b> .....                                 | 44 |
| 4.1 Edit some parameters in source code .....                    | 44 |
| 4.2 F1-F10 keys instead of F11-F20 .....                         | 44 |
| <b>5. Development History</b> .....                              | 45 |

# 1. Introduction

Hi and congratulations with usage of VTfm – the Norton Commander Style Video Terminals file manager! It was developed by me *especially for DEC VT-series terminals and OpenVMS operating system for DEC VAX, Alpha and Intel Itanium (IA64) architectures*. Also you can use VTfm with *terminal emulators*, which can emulate DEC VT-series terminals (PowerTerm, for example).

VTfm is a *freeware open source* program, which developed on DEC C V6.0 language and uses the following OpenVMS facilities:

- **LIB** (RTL Library),
- **RMS** (Record Management Services),
- **SMG** (RTL Screen Management),
- **STR** (RTL String Manipulation),
- **SYS** (System Services),
- **TPU** (Text Processing Utility).

## 1.1 Current features

- ✓ *Working technique is similar to well known Norton Commander program, i.e. navigate through disk directory content with use of <Up/Down> arrow or <Next/Prev> keys and enter into subdirectory and back with use of <Return> (<Enter>) key.*
- ✓ *Select and UnSelect files by wildcard mask with use of <Sel/Rem> keys or manually with use of <Ins> key.*
- ✓ *Files filtering in directory panels by wildcard mask with use of <Find> key.*
- ✓ *One touch View and Edit file content with use of integrated TPU editor.*
- ✓ *Copy, Rename, Move and Delete disk directory trees.*
- ✓ *Works with OpenVMS Extended File Specifications on ODS-5 volumes.*
- ✓ *Supports DEC VT-terminal modes with more than 24×80 rows/columns.*
- ✓ *Direct going to any disk directory in the OpenVMS cluster.*
- ✓ *Supports logicals when GotoDirectory, Copy, Rename and Move files (SYS\$LOGIN, SYS\$MANAGER, SYS\$SYSTEM, SYS\$COMMON, SYS\$SCRATCH, SYS\$DISK etc.).*
- ✓ *Rotating directory panels from the default LEFT/RIGHT to UP/DOWN orientation and back for view long file specifications.*
- ✓ *Switching view of file size from blocks to bytes and back.*
- ✓ *Command line is up to 4K characters (with OpenVMS V8.0 and later).*
- ✓ *Environment file for storing environment information when exit VTfm.*

## 1.2 Current restrictions

- *supports only LOCAL or CLUSTERWIDE disk devices when GotoDirectory, Copy, Rename, Move or Delete (if need to use NODE specification use VTfm command line);*
- *does not support "\*", "%", "?", "[.", ".]", "[-", "-." and "..." in directory specification when GotoDirectory, Copy, Rename or Move;*
- *does not open any archive files (use correspondent utility in VTfm command line).*

## 2. Installation

The VTfm installation process is very simple and includes the following two steps:

- *Unzip* VTFM.ZIP kit in some directory and then use the following DCL commands

```
$ SET DEFAULT [.VTFM]
$ @VTFM.COM
```

The result of this operation is VTfm executable VTFM.VAX\_EXE for VAX, VTFM.ALPHA\_EXE for ALPHA or VTFM.IA64\_EXE for ITANIUM (IA64).

- *Define* DCL symbol for VTfm executable. For example, for Alpha architecture define

```
$ VTFM := $DEV:[DIR]VTFM.ALPHA_EXE
```

where DEV and DIR are device and directory where you built VTfm executable.

Now you can invoke VTfm with the command:

```
$ VTFM
```

### Notes

1. If result of command “\$ @VTFM.COM” is not successful (for example, if you have older DEC C compiler) try to edit VTFM.COM file and modify line

```
“$ cc/nodebug/...”
to
“$ cc/standard=vaxc/nodebug/...”
```

2. If you receive a message about *exceeded quota* when execute “\$ @VTFM.COM” or invoke VTfm then *increase Pgfquo* quota for your account.

### 2.1 Terminal settings

VTfm uses terminal characteristics, which was set *before* VTfm invocation. So, you must use default 80×24 width/page (columns/rows) or set numbers of terminal columns you wish for VTfm with, for example, the following DCL command

```
$ SET TERMINAL/INQUIRE/WIDTH=132
```

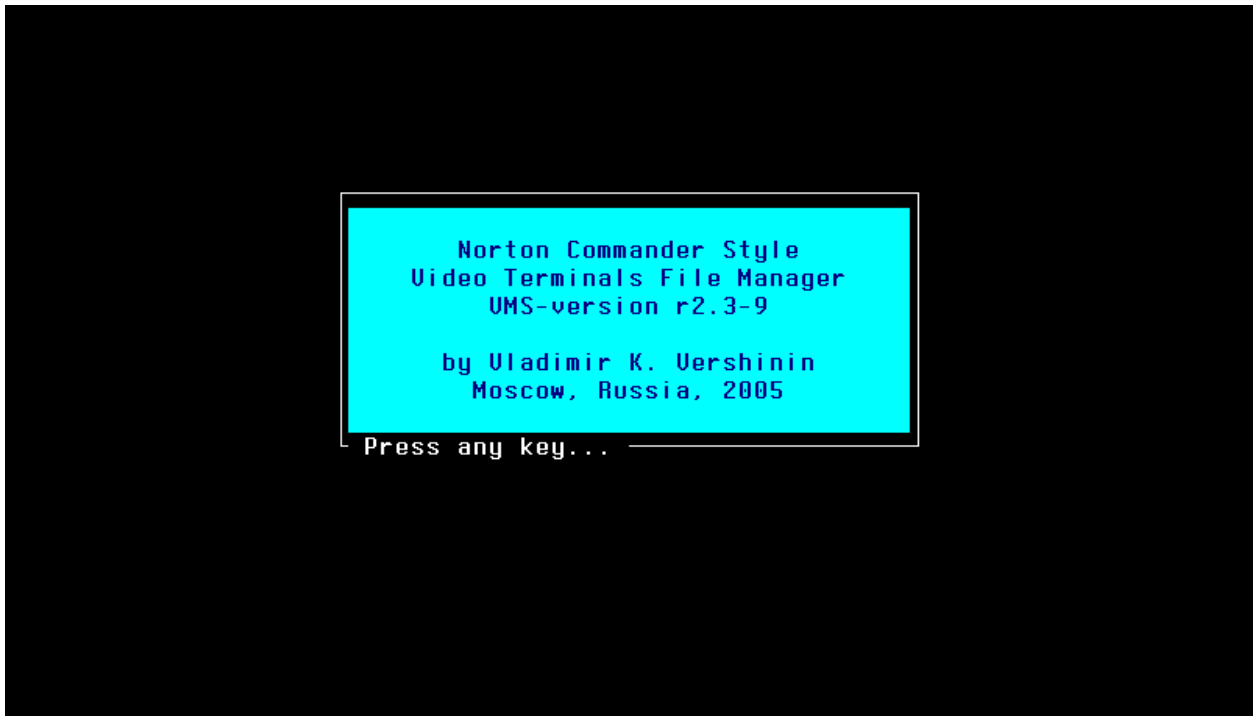
### 2.2 TPU settings

VTfm includes an integrated TPU facility, which also uses settings that was set for it *before* VTfm invocation. For example, if you wish EDT-style keypad functionality for VTfm integrated TPU you can define logical name EVE\$KEYPAD with the following DCL command

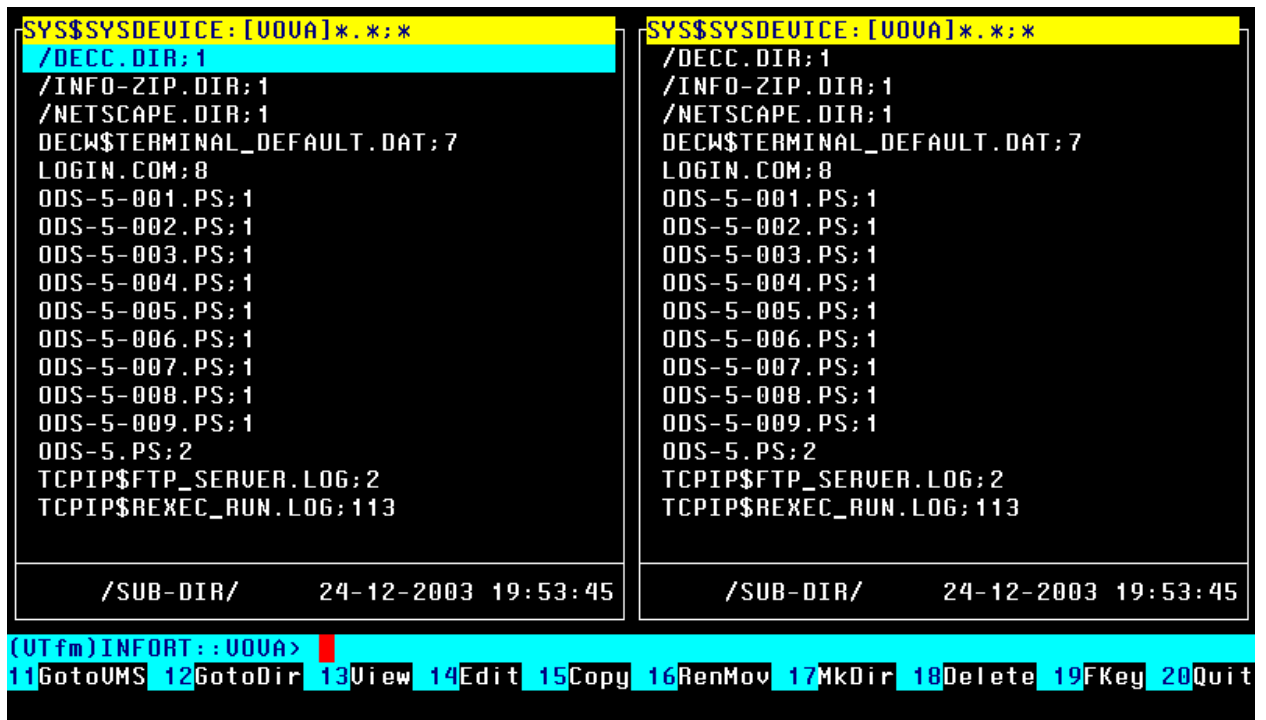
```
$ DEFINE/NOLOG EVE$KEYPAD EDT
```

### 3. VTfm usage

After invoke VTfm you will see the following splash screen



When you press a some key, VTfm reads your **SYSS\$LOGIN** (home) directory or directories from your **environment file** (if it exists, see 3.19) and shows the following screen



As you see, this screen consists of two *directory panels*: left and right.

When you work with VTfm, the top highlighted (*yellow* in our example) line of each panel shows the current default directory and the current files *filter wildcard mask* for this panel. This line called a *panel header* or *directory line*.

Lower the panel header you can see a directory *files list* where current file is highlighted with the *file bar* (*cyan* in our example). At top of files list VTfm shows files with DIR extension which also marked with the first slash “/” symbol.

Lower the directory files list there is a *statistics line*, where you can see brief information about current file of directory panel. If current file is a directory then VTfm shows it type: /SUB-DIR/, /UP-DIR/ or /ROOT-DIR/. If current file is *not* a directory then VTfm shows it size in blocks (the default) or bytes. In both cases VTfm also shows the current file creation date and time.

The next line of VTfm screen is a *command line*, which contains a *cursor* (*red* block in our example) and starts with a *prompt*, which consists of:

- **(VTfm)** - VTfm *mark*,
- **INFORT::** - OpenVMS *node name*,
- **VOVA** - OpenVMS *user name*.

Command line can contain up to 255 characters for OpenVMS of versions prior 8.0 and up to 4K characters for OpenVMS of version 8.0 and later.

The bottom line of the screen is a *menu line*, which contains VTfm *operation keys* description:

- 11 **GotoVMS** - <F11> *enter to DCL environment*,
- 12 **GotoDir** - <F12> *direct going to some disk directory*,
- 13 **View** - <F13> *view the content of current file*,
- 14 **Edit** - <F14> *edit the existent or create new text file*,
- 15 **Copy** - <Help> *copy a current or selected files*,
- 16 **RenMov** - <Do> *rename/move a current or selected files*,
- 17 **MkDir** - <F17> *make a directory*,
- 18 **Delete** - <F18> *delete a current or selected files*,
- 19 **FKey** - <F19> *quick help (brief description of other function keys)*,
- 20 **Quit** - <F20> *quit VTfm*.

The following sections of this guide discuss the actions of these operation keys.

### 3.1 Navigation through directory panels

For navigation through directory panels VTfm uses the technique, which is similar to well known Norton Commander program, i.e. to navigate through disk directory content you can use *Down/Up* arrow keys (for move to the next or previous file) or *Next/Prev* keys (for move to the next or previous panel page).

For move to BOTTOM/TOP of panel press <PFI>+<Next> or <PFI>+<Prev> keys.

For switch to another panel simply press <Tab> key.

If you wish to *enter into subdirectory* then move to the directory file (DECC.DIR;1 on the previous screen) and press <Return> (<Enter>) key. The following screen is a result of such action

|  |  |
|--|--|
| <pre> SYS\$SYSDEVICE: [UOVA.DECC]*.*:* .. /FREWARE-CD.DIR;1 /NETSCAPE.DIR;1 /UTFM.DIR;1 DECW\$TERMINAL_DEFAULT.DAT;10 LOGIN.COM;10 TCPIP\$FTP_SERVER.LOG;13 TCPIP\$FTP_SERVER.LOG;12 TCPIP\$FTP_SERVER.LOG;11 TCPIP\$REXEC_RUN.LOG;45 VUE\$PROFILE.VUE\$DAT;1 </pre> | <pre> SYS\$SYSDEVICE: [UOVA]*.*:* /DECC.DIR;1 /INFO-ZIP.DIR;1 /NETSCAPE.DIR;1 DECW\$TERMINAL_DEFAULT.DAT;7 LOGIN.COM;8 ODS-5-001.PS;1 ODS-5-002.PS;1 ODS-5-003.PS;1 ODS-5-004.PS;1 ODS-5-005.PS;1 ODS-5-006.PS;1 ODS-5-007.PS;1 ODS-5-008.PS;1 ODS-5-009.PS;1 ODS-5.PS;2 TCPIP\$FTP_SERVER.LOG;2 TCPIP\$REXEC_RUN.LOG;113 </pre> |
| /UP-DIR/ 24-12-2003 19:53:45   | /SUB-DIR/ 24-12-2003 19:53:45  |

(Utm)INFOR: :UOVA>   
11GotoUMS 12GotoDir 13View 14Edit 15Copy 16RenMov 17MkDir 18Delete 19FKey 20Quit

For *return to the up-directory* move to the top line of panel with two initial periods “..” and also press <Return> (<Enter>) key

|  |  |
|--|--|
| <pre> SYS\$SYSDEVICE: [UOVA]*.*:* /DECC.DIR;1 /INFO-ZIP.DIR;1 /NETSCAPE.DIR;1 DECW\$TERMINAL_DEFAULT.DAT;7 LOGIN.COM;8 ODS-5-001.PS;1 ODS-5-002.PS;1 ODS-5-003.PS;1 ODS-5-004.PS;1 ODS-5-005.PS;1 ODS-5-006.PS;1 ODS-5-007.PS;1 ODS-5-008.PS;1 ODS-5-009.PS;1 ODS-5.PS;2 TCPIP\$FTP_SERVER.LOG;2 TCPIP\$REXEC_RUN.LOG;113 </pre> | <pre> SYS\$SYSDEVICE: [UOVA]*.*:* /DECC.DIR;1 /INFO-ZIP.DIR;1 /NETSCAPE.DIR;1 DECW\$TERMINAL_DEFAULT.DAT;7 LOGIN.COM;8 ODS-5-001.PS;1 ODS-5-002.PS;1 ODS-5-003.PS;1 ODS-5-004.PS;1 ODS-5-005.PS;1 ODS-5-006.PS;1 ODS-5-007.PS;1 ODS-5-008.PS;1 ODS-5-009.PS;1 ODS-5.PS;2 TCPIP\$FTP_SERVER.LOG;2 TCPIP\$REXEC_RUN.LOG;113 </pre> |
| /SUB-DIR/ 24-12-2003 19:53:45  | /SUB-DIR/ 24-12-2003 19:53:45  |

(Utm)INFOR: :UOVA>   
11GotoUMS 12GotoDir 13View 14Edit 15Copy 16RenMov 17MkDir 18Delete 19FKey 20Quit

Note that after return to up-directory the file bar *highlights* its file DECC.DIR;1.





Now press ^W key and look on the screen

```

SYS$SYSDEVICE: [UOVA]*.*:*
ODS-5-007.PS;1
ODS-5-008.PS;1
ODS-5-009.PS;1
ODS-5.PS;2
TCPIP$FTP_SERVER.LOG;2
TCPIP$REXEC_RUN.LOG;113
THIS_FILE_HAS_A_LONG_NAME.AND_LONG_EXTENSION;1
1 block 6-01-2005 20:40:41

SYS$SYSDEVICE: [UOVA]*.*:*
/DECC.DIR;1
/INFO-ZIP.DIR;1
/NETSCAPE.DIR;1
DECW$TERMINAL_DEFAULT.DAT;7
LOGIN.COM;8
ODS-5-001.PS;1
ODS-5-002.PS;1
/SUB-DIR/ 24-12-2003 19:53:45

(UTfm)INFORT::UOVA>
11GotoUMS 12GotoDir 13View 14Edit 15Copy 16RenMov 17MkDir 18Delete 19FKey 20Quit

```

Yes, the LEFT panel is now a TOP one and RIGHT is a BOTTOM! Press ^W key once more

```

SYS$SYSDEVICE: [UOVA]*.*:*
/INFO-ZIP.DIR;1
/NETSCAPE.DIR;1
DECW$TERMINAL_DEFAULT.DAT;7
LOGIN.COM;8
ODS-5-001.PS;1
ODS-5-002.PS;1
ODS-5-003.PS;1
ODS-5-004.PS;1
ODS-5-005.PS;1
ODS-5-006.PS;1
ODS-5-007.PS;1
ODS-5-008.PS;1
ODS-5-009.PS;1
ODS-5.PS;2
TCPIP$FTP_SERVER.LOG;2
TCPIP$REXEC_RUN.LOG;113
THIS_FILE_HAS_A_LONG_NAME.AND_LONG_EX
TPU$WORK.TPU$WORK;1
1 block 6-01-2005 20:40:41

SYS$SYSDEVICE: [UOVA]*.*:*
/DECC.DIR;1
/INFO-ZIP.DIR;1
/NETSCAPE.DIR;1
DECW$TERMINAL_DEFAULT.DAT;7
LOGIN.COM;8
ODS-5-001.PS;1
ODS-5-002.PS;1
ODS-5-003.PS;1
ODS-5-004.PS;1
ODS-5-005.PS;1
ODS-5-006.PS;1
ODS-5-007.PS;1
ODS-5-008.PS;1
ODS-5-009.PS;1
ODS-5.PS;2
TCPIP$FTP_SERVER.LOG;2
TCPIP$REXEC_RUN.LOG;113
THIS_FILE_HAS_A_LONG_NAME.AND_LONG_EX
/SUB-DIR/ 24-12-2003 19:53:45

(UTfm)INFORT::UOVA>
11GotoUMS 12GotoDir 13View 14Edit 15Copy 16RenMov 17MkDir 18Delete 19FKey 20Quit

```

### 3.4 View file size

Now move to the file ODS-5-009.PS;1 and look on the *statistics line* in which you see that size of this file is 1030 *blocks* (this is a default view)

|  |  |
|--|--|
| <pre> SYS\$SYSDEVICE: [UOVA]*.*:* /DECC.DIR; 1 /INFO-ZIP.DIR; 1 /NETSCAPE.DIR; 1 DECW\$TERMINAL_DEFAULT.DAT; 7 LOGIN.COM; 8 ODS-5-001.PS; 1 ODS-5-002.PS; 1 ODS-5-003.PS; 1 ODS-5-004.PS; 1 ODS-5-005.PS; 1 ODS-5-006.PS; 1 ODS-5-007.PS; 1 ODS-5-008.PS; 1 ODS-5-009.PS; 1 ODS-5.PS; 2 TCPIP\$FTP_SERVER.LOG; 2 TCPIP\$REXEC_RUN.LOG; 113 THIS_FILE_HAS_A_LONG_NAME.AND_LONG_EX 1030 blocks    11-10-2004 22:18:40 </pre> | <pre> SYS\$SYSDEVICE: [UOVA]*.*:* /DECC.DIR; 1 /INFO-ZIP.DIR; 1 /NETSCAPE.DIR; 1 DECW\$TERMINAL_DEFAULT.DAT; 7 LOGIN.COM; 8 ODS-5-001.PS; 1 ODS-5-002.PS; 1 ODS-5-003.PS; 1 ODS-5-004.PS; 1 ODS-5-005.PS; 1 ODS-5-006.PS; 1 ODS-5-007.PS; 1 ODS-5-008.PS; 1 ODS-5-009.PS; 1 ODS-5.PS; 2 TCPIP\$FTP_SERVER.LOG; 2 TCPIP\$REXEC_RUN.LOG; 113 THIS_FILE_HAS_A_LONG_NAME.AND_LONG_EX /SUB-DIR/      24-12-2003 19:53:45 </pre> |
|--|--|

(VTfm)INFORT::UOVA> **11GotoVMS 12GotoDir 13View 14Edit 15Copy 16RenMov 17Mkdir 18Delete 19FKey 20Quit**

If you wish to know the file size in *bytes* than press ^B key

|  |  |
|--|--|
| <pre> SYS\$SYSDEVICE: [UOVA]*.*:* /DECC.DIR; 1 /INFO-ZIP.DIR; 1 /NETSCAPE.DIR; 1 DECW\$TERMINAL_DEFAULT.DAT; 7 LOGIN.COM; 8 ODS-5-001.PS; 1 ODS-5-002.PS; 1 ODS-5-003.PS; 1 ODS-5-004.PS; 1 ODS-5-005.PS; 1 ODS-5-006.PS; 1 ODS-5-007.PS; 1 ODS-5-008.PS; 1 ODS-5-009.PS; 1 ODS-5.PS; 2 TCPIP\$FTP_SERVER.LOG; 2 TCPIP\$REXEC_RUN.LOG; 113 THIS_FILE_HAS_A_LONG_NAME.AND_LONG_EX 527200 bytes   11-10-2004 22:18:40 </pre> | <pre> SYS\$SYSDEVICE: [UOVA]*.*:* /DECC.DIR; 1 /INFO-ZIP.DIR; 1 /NETSCAPE.DIR; 1 DECW\$TERMINAL_DEFAULT.DAT; 7 LOGIN.COM; 8 ODS-5-001.PS; 1 ODS-5-002.PS; 1 ODS-5-003.PS; 1 ODS-5-004.PS; 1 ODS-5-005.PS; 1 ODS-5-006.PS; 1 ODS-5-007.PS; 1 ODS-5-008.PS; 1 ODS-5-009.PS; 1 ODS-5.PS; 2 TCPIP\$FTP_SERVER.LOG; 2 TCPIP\$REXEC_RUN.LOG; 113 THIS_FILE_HAS_A_LONG_NAME.AND_LONG_EX /SUB-DIR/      24-12-2003 19:53:45 </pre> |
|--|--|

(VTfm)INFORT::UOVA> **11GotoVMS 12GotoDir 13View 14Edit 15Copy 16RenMov 17Mkdir 18Delete 19FKey 20Quit**

Now you see that file ODS-5-009.PS;1 has 527200 *bytes*. Press ^B key again to view file size in blocks.

### 3.5 GotoVMS <F11> (enter to DCL environment)

Sometimes you need to *enter to OpenVMS DCL environment without leaving VTfm* program. For this press <F11> key and VTfm creates a *subprocess* in which you can do your work. To return to VTfm simply Logout from this subprocess.

```
GotoVMS (to return to UTfm simply LOGout)...
(UTfm)INFORT::UOVA> sh dev d

Device Name           Device Status      Error Count   Volume Label      Free Blocks  Trans Count  Mnt Cnt
INFORT$DUA0:         Mounted        0           0          OUMSUAXSYS      1337895     279        1
INFORT$DUA1:         Online         0           0
INFORT$DUA2:         Mounted wrtclk  0           0          UAXDOCDEC991    259314     1          1
INFORT$DUA3:         Mounted wrtclk  0           0          UAXDOCDEC992    180729     1          1
INFORT$DUB0:         Online         0           0
INFORT$DUB1:         Online         0           0
INFORT$DUB2:         Online         0           0
INFORT$DUB3:         Online         0           0
(UTfm)INFORT::UOVA> lo
  Process UOVA_1 logged out at 6-JAN-2005 21:53:30.71

Press any key... █
```

### Note

If you receive a message about *exceeded quota* then *increase Pqflquo* quota for your account.

## 3.6 GotoDir <F12> (direct going to some disk directory)

Sometimes it is quicker to go to some directory without navigation through directory tree with pressing of <Return> (<Enter>) key. It is also useful because in OpenVMS operating system access to root disk directory may be denied for nonprivilege user. This possibility is also the only way to go to directory on another disk and use various OpenVMS logicals. So, press <F12> key

```

SYS$SYSDEVICE: [UOVA]*.*:*
/DECC.DIR; 1
/INFO-ZIP.DIR; 1
/NETSCAPE.DIR; 1
DECW$TERMINAL_DEFAULT.DAT; 7
LOGIN.COM; 8
ODS-5-001.PS; 1
ODS-5-002.PS; 1

SYS$SYSDEVICE: [UOVA.INFO-ZIP]*.*:*
..
UNZIP.EXE; 1
ZIP.EXE; 1
ZIPCLOAK.EXE; 1
ZIPNOTE.EXE; 1
ZIPSPLIT.EXE; 1
ZIP_CLI.EXE; 1

GO TO DIRECTORY

SYS$SYSDEVICE: [UOVA]

ODS-5-008.PS; 1
ODS-5-009.PS; 1
ODS-5.PS; 2
TCPIP$FTP_SERVER.LOG; 2
TCPIP$REXEC_RUN.LOG; 113
THIS_FILE_HAS_A_LONG_NAME.AND_LONG_EX

1030 blocks 11-10-2004 22:18:40 /UP-DIR/ 10-08-2004 02:53:39

(UTfm)INFORT::UOVA>
11GotoVMS 12GotoDir 13View 14Edit 15Copy 16RenMov 17MkDir 18Delete 19FKey 20Quit
```

In the "GO TO DIRECTORY" window you can input and edit directory specification by ordinary way as in the OpenVMS command line (for cancel GotoDir operation press VTfm escape <KP0> key)

```

SYS$SYSDEVICE: [UOVA]*.*;*
/DECC.DIR;1
/INFO-ZIP.DIR;1
/NETSCAPE.DIR;1
DECW$TERMINAL_DEFAULT.DAT;7
LOGIN.COM;8
ODS-5-001.PS;1
ODS-5-002.PS;1

SYS$SYSDEVICE: [UOVA.INFO-ZIP]*.*;*
..
UNZIP.EXE;1
ZIP.EXE;1
ZIPCLOAK.EXE;1
ZIPNOTE.EXE;1
ZIPSPLIT.EXE;1
ZIP_CLI.EXE;1

GO TO DIRECTORY

dub0: [vova]

ODS-5-008.PS;1
ODS-5-009.PS;1
ODS-5.PS;2
TCPIP$FTP_SERVER.LOG;2
TCPIP$REXEC_RUN.LOG;113
THIS_FILE_HAS_A_LONG_NAME.AND_LONG_EX

1030 blocks    11-10-2004 22:18:40

/UP-DIR/      10-08-2004 02:53:39

(UTfm)INFORT::UOVA>
11GotoUMS 12GotoDir 13View 14Edit 15Copy 16RenMov 17MkDir 18Delete 19FKey 20Quit

```

Now press <Return> (<Enter>) key to execute your command

```

DUB0: [UOVA]*.*;*
No files found

SYS$SYSDEVICE: [UOVA.INFO-ZIP]*.*;*
..
UNZIP.EXE;1
ZIP.EXE;1
ZIPCLOAK.EXE;1
ZIPNOTE.EXE;1
ZIPSPLIT.EXE;1
ZIP_CLI.EXE;1

/ROOT-DIR/

/UP-DIR/      10-08-2004 02:53:39

(UTfm)INFORT::UOVA>
11GotoUMS 12GotoDir 13View 14Edit 15Copy 16RenMov 17MkDir 18Delete 19FKey 20Quit

```

Press <F12> key once more and input name of SYSS\$MANAGER directory

```
DUB0: [UOVA]*.*;*
No files found

SYS$SYSDEVICE: [UOVA.INFO-ZIP]*.*;*
..
UNZIP.EXE;1
ZIP.EXE;1
ZIPCLOAK.EXE;1
ZIPNOTE.EXE;1
ZIPSPLIT.EXE;1
ZIP_CLI.EXE;1

GO TO DIRECTORY

sys$manager

/ROOT-DIR/
/UP-DIR/ 10-08-2004 02:53:39

(UTfm)INFORT::UOVA>
11GotoUMS 12GotoDir 13View 14Edit 15Copy 16RenMov 17MkDir 18Delete 19FKey 20Quit
```

Press <Return> (<Enter>) key for go to SYSS\$MANAGER

```
SYS$SYSROOT: [SYSMGR]*.*;*
/NETSCAPE.DIR;1
ACCOUNTNG.DAT;1
CLUE$HISTORY.DATA;1
CLUE$LAST_INFORT.LIS;1
DCE_OUT0000011B.TMP;1
DCE_OUT0000011C.TMP;1
DECNET_REGISTER_IMPORT_FILE_INFORT.TXT
DECM$TERMINAL_DEFAULT.DAT;18
DNS$ADVER_ERROR.LOG;244
DNS$ADVER_ERROR.LOG;243
DNS$ADVER_ERROR.LOG;242
DTSS$ERROR.LOG;106
DTSS$ERROR.LOG;105
DTSS$ERROR.LOG;104
DTSS$ERROR.LOG;103
DTSS$ERROR.LOG;102
DTSS$ERROR.LOG;101
DTSS$ERROR.LOG;100

SYS$SYSDEVICE: [UOVA.INFO-ZIP]*.*;*
..
UNZIP.EXE;1
ZIP.EXE;1
ZIPCLOAK.EXE;1
ZIPNOTE.EXE;1
ZIPSPLIT.EXE;1
ZIP_CLI.EXE;1

/SUB-DIR/ 25-12-2003 23:59:53
/UP-DIR/ 10-08-2004 02:53:39

(UTfm)INFORT::UOVA>
11GotoUMS 12GotoDir 13View 14Edit 15Copy 16RenMov 17MkDir 18Delete 19FKey 20Quit
```

Press <F12> key and input directory specification SYS\$COMMON:[000000]

```

SYS$SYSROOT: [SYSMGR]*.*:*
/NETSCAPE.DIR; 1
ACCOUNTNG.DAT; 1
CLUE$HISTORY.DAT; 1
CLUE$LAST_INFORT.LIS; 1
DCE_OUT0000011B.TMP; 1
DCE_OUT0000011C.TMP; 1
DECNET_REGISTER_IMPORT_FILE_INFORT.TX
GO TO DIRECTORY

SYS$SYSDEVICE: [UOVA.INFO-ZIP]*.*:*
..
UNZIP.EXE; 1
ZIP.EXE; 1
ZIPCLOAK.EXE; 1
ZIPNOTE.EXE; 1
ZIPSPLIT.EXE; 1
ZIP_CLI.EXE; 1

sys$common: [000000]

DTSS$ERROR.LOG; 105
DTSS$ERROR.LOG; 104
DTSS$ERROR.LOG; 103
DTSS$ERROR.LOG; 102
DTSS$ERROR.LOG; 101
DTSS$ERROR.LOG; 100

/SUB-DIR/      25-12-2003 23:59:53
/UP-DIR/      10-08-2004 02:53:39

(UTfm)INFORT: :UOVA>
11GotoUMS 12GotoDir 13View 14Edit 15Copy 16RenMov 17Mkdir 18Delete 19FKey 20Quit

```

When you press <Return> (<Enter>) key you go to SYS\$COMMON:[000000] directory

```

SYS$COMMON: [000000]*.*:*
/CDALIBRARY.DIR; 1
/DCELOCAL.DIR; 1
/DECC$LIB.DIR; 1
/DECW$BOOK.DIR; 1
/DECW$DEFAULTS.DIR; 1
/DECW$INCLUDE.DIR; 1
/HYPERHELP.DIR; 1
/MOM$SYSTEM.DIR; 1
/SYS$I18N.DIR; 1
/SYS$KEYMAP.DIR; 1
/SYS$LDR.DIR; 1
/SYS$STARTUP.DIR; 1
/SYS$ZONEINFO.DIR; 1
/SYSCBI.DIR; 1
/SYSERR.DIR; 1
/SYSEXE.DIR; 1
/SYSFONT.DIR; 1
/SYSHLP.DIR; 1

SYS$SYSDEVICE: [UOVA.INFO-ZIP]*.*:*
..
UNZIP.EXE; 1
ZIP.EXE; 1
ZIPCLOAK.EXE; 1
ZIPNOTE.EXE; 1
ZIPSPLIT.EXE; 1
ZIP_CLI.EXE; 1

/SUB-DIR/      19-10-2004 16:18:51
/UP-DIR/      10-08-2004 02:53:39

(UTfm)INFORT: :UOVA>
11GotoUMS 12GotoDir 13View 14Edit 15Copy 16RenMov 17Mkdir 18Delete 19FKey 20Quit

```

Now press <F12> key and enter name of SYS\$LOGIN directory

```

SYS$COMMON: [000000]*.*:*
/CDAS$LIBRARY.DIR; 1
/DCELOCAL.DIR; 1
/DECC$LIB.DIR; 1
/DECW$BOOK.DIR; 1
/DECW$DEFAULTS.DIR; 1
/DECW$INCLUDE.DIR; 1
/HYPERHELP.DIR; 1
SYS$SYSDEVICE: [UOVA.INFO-ZIP]*.*:*
..
UNZIP.EXE; 1
ZIP.EXE; 1
ZIPCLOAK.EXE; 1
ZIPNOTE.EXE; 1
ZIPSPLIT.EXE; 1
ZIP_CLI.EXE; 1
GO TO DIRECTORY
sys$login
/SYS$ZONEINFO.DIR; 1
/SYSCBI.DIR; 1
/SYSERR.DIR; 1
/SYSEXEC.DIR; 1
/SYSFONT.DIR; 1
/SYSHLP.DIR; 1
/SUB-DIR/ 19-10-2004 16:18:51
/UP-DIR/ 10-08-2004 02:53:39
(Utfm)INFORM: :UOVA>
11GotoUMS 12GotoDir 13View 14Edit 15Copy 16RenMov 17Mkdir 18Delete 19FKey 20Quit

```

Go to SYS\$LOGIN by pressing <Return> (<Enter>) key

```

SYS$SYSDEVICE: [UOVA]*.*:*
/DECC.DIR; 1
/INFO-ZIP.DIR; 1
/NETSCAPE.DIR; 1
DECW$TERMINAL_DEFAULT.DAT; 7
LOGIN.COM; 8
ODS-5-001.PS; 1
ODS-5-002.PS; 1
ODS-5-003.PS; 1
ODS-5-004.PS; 1
ODS-5-005.PS; 1
ODS-5-006.PS; 1
ODS-5-007.PS; 1
ODS-5-008.PS; 1
ODS-5-009.PS; 1
ODS-5.PS; 2
TCPIP$FTP_SERVER.LOG; 2
TCPIP$REXEC_RUN.LOG; 113
THIS_FILE_HAS_A_LONG_NAME.AND_LONG_EX
SYS$SYSDEVICE: [UOVA.INFO-ZIP]*.*:*
..
UNZIP.EXE; 1
ZIP.EXE; 1
ZIPCLOAK.EXE; 1
ZIPNOTE.EXE; 1
ZIPSPLIT.EXE; 1
ZIP_CLI.EXE; 1
/SUB-DIR/ 24-12-2003 19:53:45
/UP-DIR/ 10-08-2004 02:53:39
(Utfm)INFORM: :UOVA>
11GotoUMS 12GotoDir 13View 14Edit 15Copy 16RenMov 17Mkdir 18Delete 19FKey 20Quit

```

### 3.7 View <F13> (view the content of current file)

Move to the file DECW\$TERMINAL\_DEFAULT.DAT;7

|  |  |
|--|--|
| <pre> SYS\$SYSDEVICE: [UOVA]*.*;* /DECC.DIR;1 /INFO-ZIP.DIR;1 /NETSCAPE.DIR;1 DECW\$TERMINAL_DEFAULT.DAT;7 LOGIN.COM;8 ODS-5-001.PS;1 ODS-5-002.PS;1 ODS-5-003.PS;1 ODS-5-004.PS;1 ODS-5-005.PS;1 ODS-5-006.PS;1 ODS-5-007.PS;1 ODS-5-008.PS;1 ODS-5-009.PS;1 ODS-5.PS;2 TCPIP\$FTP_SERVER.LOG;2 TCPIP\$REXEC_RUN.LOG;113 THIS_FILE_HAS_A_LONG_NAME.AND_LONG_EX 3 blocks      20-11-2004 20:52:40 </pre> | <pre> SYS\$SYSDEVICE: [UOVA.INFO-ZIP]*.*;* .. UNZIP.EXE;1 ZIP.EXE;1 ZIPCLOAK.EXE;1 ZIPNOTE.EXE;1 ZIPSPLIT.EXE;1 ZIP_CLI.EXE;1 /UP-DIR/      10-08-2004 02:53:39 </pre> |
|--|--|

(Ufm)INFOR::UOVA> **11GotoUMS 12GotoDir 13View 14Edit 15Copy 16RenMov 17MkDir 18Delete 19FKey 20Quit**

And press <F13> key to invoke the TPU editor

```

DECW$TERMINAL.main.terminal.displayHeightInc: 14
DECW$TERMINAL.main.terminal.bitPlanes: 4
DECW$TERMINAL.main.terminal.background: #000000000000
DECW$TERMINAL.main.terminal.screenMode: off
DECW$TERMINAL.main.terminal.littleFontOtherName: -dec-terminal-*-*-*--14
DECW$TERMINAL.main.terminal.fontUsed: -dec-terminal-medium-r-narrow--14-100-1
DECW$TERMINAL.main.terminal.fontSetSelection: 1
DECW$TERMINAL.main.terminal.rows: 48
DECW$TERMINAL.main.terminal.autoWrapEnable: on
DECW$TERMINAL.main.terminal.condensedFont: on
DECW$TERMINAL.main.terminal.columns: 132
DECW$TERMINAL.main.terminal.foreground: #ffffffffffff
DECW$TERMINAL.main.terminal.borderColor: #ffffffffffff
DECW$TERMINAL.main.terminal.displayWidth: 819
DECW$TERMINAL.main.terminal.wmHintsBaseHeight: 32
DECW$TERMINAL.main.terminal.gsFontOtherName: -dec-terminal-*-*-*-gs-14-*-*-*
DECW$TERMINAL.main.terminal.bigFontOtherName: -bitstream-terminal-*-*-*--18-*
DECW$TERMINAL.main.terminal.displayHeight: 680
DECW$TERMINAL.main.terminal.defaultTitle: Uova
DECW$TERMINAL.main.terminal.displayWidthInc: 6
DECW$TERMINAL.main.terminal.defaultIconName: Uova
Buffer: DECW$TERMINAL_DEFAULT.DAT | Read-only | Unmodifiable | Forward
Editing session is not being journaled

```



Exit from TPU editor

```
DECW$TERMINAL.main.terminal.screenMode: off
DECW$TERMINAL.main.terminal.littleFontOtherName: -dec-terminal-***--14
DECW$TERMINAL.main.terminal.fontUsed: -dec-terminal-medium-r-narrow--14-100-1
DECW$TERMINAL.main.terminal.fontSetSelection: 1
DECW$TERMINAL.main.terminal.rows: 48
DECW$TERMINAL.main.terminal.autoWrapEnable: on
DECW$TERMINAL.main.terminal.condensedFont: on
DECW$TERMINAL.main.terminal.columns: 132
DECW$TERMINAL.main.terminal.foreground: #ffffffffffff
DECW$TERMINAL.main.terminal.borderColor: #ffffffffffff
DECW$TERMINAL.main.terminal.displayWidth: 819
DECW$TERMINAL.main.terminal.wmHintsBaseHeight: 32
DECW$TERMINAL.main.terminal.gsFontOtherName: -dec-terminal-***-gs-14-***
DECW$TERMINAL.main.terminal.bigFontOtherName: -bitstream-terminal-***--18-
DECW$TERMINAL.main.terminal.displayHeight: 680
DECW$TERMINAL.main.terminal.defaultTitle: Uova
DECW$TERMINAL.main.terminal.displayWidthInc: 6
DECW$TERMINAL.main.terminal.defaultIconName: Uova
Buffer: DECW$TERMINAL_DEFAULT.DAT | Read-only | Unmodifiable | Forward
Editing session is not being journaled
Press any key... █
```

And press some key to return to VTfm panels screen

```
SYS$SYSDEVICE: [UOVA]*.*:*
/DECC.DIR; 1
/INFO-ZIP.DIR; 1
/NETSCAPE.DIR; 1
DECW$TERMINAL_DEFAULT.DAT; 7
LOGIN.COM; 8
ODS-5-001.PS; 1
ODS-5-002.PS; 1
ODS-5-003.PS; 1
ODS-5-004.PS; 1
ODS-5-005.PS; 1
ODS-5-006.PS; 1
ODS-5-007.PS; 1
ODS-5-008.PS; 1
ODS-5-009.PS; 1
ODS-5.PS; 2
TCPIP$FTP_SERVER.LOG; 2
TCPIP$REXEC_RUN.LOG; 113
THIS_FILE_HAS_A_LONG_NAME.AND_LONG_EX

3 blocks      20-11-2004 20:52:40

SYS$SYSDEVICE: [UOVA.INFO-ZIP]*.*:*
..
UNZIP.EXE; 1
ZIP.EXE; 1
ZIPCLOAK.EXE; 1
ZIPNOTE.EXE; 1
ZIPSPILT.EXE; 1
ZIP_CLI.EXE; 1

/UP-DIR/      10-08-2004 02:53:39

(VTfm)INFOR: :UOVA>
11GotoUMS 12GotoDir 13View 14Edit 15Copy 16RenMov 17MkDir 18Delete 19FKey 20Quit
```

### 3.8 Edit <F14> (edit the existent or create new text file)

Move to the file DECC.DIR;1 of DECC directory and enter into the subdirectory SYSS\$SYSDEVICE:[VOVA.DECC.VTFM.A] by pressing <Return> (<Enter>) key

```
SYS$SYSDEVICE: [VOVA.DECC.VTFM.A]*.*;*
..
FSPEC_PT.ALPHA_MAR;1
FSPEC_PT.IA64_MAR;1
FSPEC_PT.UAX_MAR;1
VTFM.C;515
VTFM.C;514
VTFM.C;513
VTFM.C;512
VTFM.C;511
VTFM.C;510
VTFM.C;509
VTFM.C;508
VTFM.C;507
VTFM.C;506
VTFM.C;505

/UP-DIR/      1-01-2005 08:19:34

SYS$SYSDEVICE: [VOVA.INFO-ZIP]*.*;*
..
UNZIP.EXE;1
ZIP.EXE;1
ZIPCLOAK.EXE;1
ZIPNOTE.EXE;1
ZIPSPLIT.EXE;1
ZIP_CLI.EXE;1

/UP-DIR/      10-08-2004 02:53:39

(UTfm)INFOR::VOVA>
11GotoUMS 12GotoDir 13View 14Edit 15Copy 16RenMov 17MkDir 18Delete 19FKey 20Quit
```

After that move to the file VTFM.C;512

```
SYS$SYSDEVICE: [VOVA.DECC.VTFM.A]*.*;*
..
FSPEC_PT.ALPHA_MAR;1
FSPEC_PT.IA64_MAR;1
FSPEC_PT.UAX_MAR;1
VTFM.C;515
VTFM.C;514
VTFM.C;513
VTFM.C;512
VTFM.C;511
VTFM.C;510
VTFM.C;509
VTFM.C;508
VTFM.C;507
VTFM.C;506
VTFM.C;505

256 blocks    1-01-2005 08:19:34

SYS$SYSDEVICE: [VOVA.INFO-ZIP]*.*;*
..
UNZIP.EXE;1
ZIP.EXE;1
ZIPCLOAK.EXE;1
ZIPNOTE.EXE;1
ZIPSPLIT.EXE;1
ZIP_CLI.EXE;1

/UP-DIR/      10-08-2004 02:53:39

(UTfm)INFOR::VOVA>
11GotoUMS 12GotoDir 13View 14Edit 15Copy 16RenMov 17MkDir 18Delete 19FKey 20Quit
```

When you press <F14> key then “EDIT” window appears (for cancel Edit operation press VTfm escape <KP0> key)

```

SYS$SYSDEVICE: [UOVA.DECC.UTFM.A]*.*;*
..
FSPEC_PT.ALPHA_MAR;1
FSPEC_PT.IA64_MAR;1
FSPEC_PT.UAX_MAR;1
UTFM.C;515
UTFM.C;514
UTFM.C;513

SYS$SYSDEVICE: [UOVA.INFO-ZIP]*.*;*
..
UNZIP.EXE;1
ZIP.EXE;1
ZIPCLOAK.EXE;1
ZIPNOTE.EXE;1
ZIPSPLIT.EXE;1
ZIP_CLI.EXE;1

EDIT

UTFM.C;512

UTFM.C;507
UTFM.C;506
UTFM.C;505

256 blocks      1-01-2005 08:19:34      /UP-DIR/      10-08-2004 02:53:39

(UTfm)INFORT::UOVA>
11GotoUMS 12GotoDir 13View 14Edit 15Copy 16RenMov 17MkDir 18Delete 19FKey 20Quit

```

If you press <Return> (<Enter>) key now then TPU editor starts to edit file VTFM.C;512

```

7*
**      Copyright (c) 1991-2004 UTfm. All rights reserved.
**
**      Norton Commander Style
**      Video Terminals File Manager
**      UMS-version
**
**      Author: Vladimir K. Vershinin, Moscow, Russia
**      E-mail: vershinin-vk@tochka.ru
**
**      History:
**
**      1991, July - First release 1.0 with name NCvtf.
**
**      - developed on UAXC v3.0;
**      - supports UT-terminal modes with only
**      24x80 rows/columns;
**      - uses EDT$EDIT routine for view and edit;
**      - works only on UAXUMS.
**
**      .
**
Buffer: UTFM.C      | Write | Insert | Forward
EDT keypad defined (for more information, see help on EDT DIFFERENCES).

```

After exit from TPU with creation of a new version of VTFM.C you will see

```
static struct tag_dir_cont cur_dir_cont[2][MAX_DIR_FQUA];
static struct tag_dir_cont old_dir_cont[2][MAX_DIR_FQUA];
static struct tag_dir_cont ord_dir_file[MAX_DIR_FQUA];
static struct fscndef fspec_ival[8]=  {{0,FSCN$_NODE,0},
                                       {0,FSCN$_DEVICE,0},
                                       {0,FSCN$_ROOT,0},
                                       {0,FSCN$_DIRECTORY,0},
                                       {0,FSCN$_NAME,0},
                                       {0,FSCN$_TYPE,0},
                                       {0,FSCN$_VERSION,0},
                                       {0,0,0}};

struct fspec_item_name
{
    char name[512];
}

Buffer: UTFM.C | Write | Insert | Forward
6101 lines written to file SYS$SYSDEVICE:[UOVA.DECC.UTFM.A]UTFM.C;516

Press any key... █
```

Press some key and return to VTfm panels screen

|   |  |
|---|--|
| <pre>SYS\$SYSDEVICE:[UOVA.DECC.UTFM.A]*.*;* .. FSPEC_PT.ALPHA_MAR;1 FSPEC_PT.IA64_MAR;1 FSPEC_PT.VAX_MAR;1 <b>UTFM.C;516</b> UTFM.C;515 UTFM.C;514 UTFM.C;513 UTFM.C;512 UTFM.C;511 UTFM.C;510 UTFM.C;509 UTFM.C;508 UTFM.C;507 UTFM.C;506 UTFM.C;505</pre> <p>256 blocks      7-01-2005 00:54:38</p> | <pre>SYS\$SYSDEVICE:[UOVA.INFO-ZIP]*.*;* .. UNZIP.EXE;1 ZIP.EXE;1 ZIPCLOAK.EXE;1 ZIPNOTE.EXE;1 ZIPSPLIT.EXE;1 ZIP_CLI.EXE;1</pre> <p>/UP-DIR/      10-08-2004 02:53:39</p> |
| <pre>(UTfm)INFOR:::UOVA&gt; 11GotoUMS 12GotoDir 13View 14Edit 15Copy 16RenMov 17MkDir 18Delete 19FKey 20Quit</pre>  |  |

As you see VTfm file bar *highlights the new version* of the file VTFM.C i.e. VTFM.C;516.

You can also edit the “EDIT” window line to create a new text file

```

SYS$SYSDEVICE: [UOVA.DECC.UTFM.A]*.*;*
..
FSPEC_PT.ALPHA_MAR;1
FSPEC_PT.IA64_MAR;1
FSPEC_PT.VAX_MAR;1
UTFM.C;516
UTFM.C;515
UTFM.C;514
                                EDIT
notes.txt
UTFM.C;508
UTFM.C;507
UTFM.C;506
UTFM.C;505
256 blocks      7-01-2005 00:54:38      /UP-DIR/      10-08-2004 02:53:39
(UTfm)INFOR:.:UOVA>
11GotoUMS 12GotoDir 13View 14Edit 15Copy 16RenMov 17Mkdir 18Delete 19FKey 20Quit

```

After exit from TPU editor with creation of file VTfm file bar also *highlights the new file* NOTES.TXT;1

```

SYS$SYSDEVICE: [UOVA.DECC.UTFM.A]*.*;*
..
FSPEC_PT.ALPHA_MAR;1
FSPEC_PT.IA64_MAR;1
FSPEC_PT.VAX_MAR;1
NOTES.TXT;1
UTFM.C;516
UTFM.C;515
UTFM.C;514
UTFM.C;513
UTFM.C;512
UTFM.C;511
UTFM.C;510
UTFM.C;509
UTFM.C;508
UTFM.C;507
UTFM.C;506
UTFM.C;505
1 block      7-01-2005 01:58:25      /UP-DIR/      10-08-2004 02:53:39
(UTfm)INFOR:.:UOVA>
11GotoUMS 12GotoDir 13View 14Edit 15Copy 16RenMov 17Mkdir 18Delete 19FKey 20Quit

```

If you press <F14> key when the current file is a directory then “EDIT” window line will be empty and you can input some file specification

```

SYS$SYSDEVICE: [UOVA.DECC.UTFM]*.*;*
..
/A.DIR;1
/B.DIR;1
/SRC.DIR;1
FSPEC_PT.OBJ;1
README.TXT;26
SAVE_UTFM.C;5
EDIT
..
UNZIP.EXE;1
ZIP.EXE;1
ZIPCLOAK.EXE;1
ZIPNOTE.EXE;1
ZIPSPLIT.EXE;1
ZIP_CLI.EXE;1
/SUB-DIR/      1-01-2005 08:19:34
/UP-DIR/       10-08-2004 02:53:39
(UTFM)INFORT::UOVA>
11GotoUMS 12GotoDir 13View 14Edit 15Copy 16RenMov 17MkDir 18Delete 19FKey 20Quit

```

### 3.9 Find <Find> (filtering files in panels)

You can filter files in panel by *wildcard mask*. For that press <Find> key and you will see “FIND” window with *current* panel filtering wildcard mask

```

SYS$SYSROOT: [SYSMGR]*.*;*
/NETSCAPE.DIR;1
ACCOUNTNG.DAT;1
CLUE$HISTORY.DATA;1
CLUE$LAST_INFORT.LIS;1
DCE_OUT0000011B.TMP;1
DCE_OUT0000011C.TMP;1
DECNET_REGISTER_IMPORT_FILE_INFORT.TXT
FIND
*.***
DTSS$ERROR.LOG;105
DTSS$ERROR.LOG;104
DTSS$ERROR.LOG;103
DTSS$ERROR.LOG;102
DTSS$ERROR.LOG;101
DTSS$ERROR.LOG;100
/SUB-DIR/      25-12-2003 23:59:53
/UP-DIR/       10-08-2004 02:53:39
(UTFM)INFORT::UOVA>
11GotoUMS 12GotoDir 13View 14Edit 15Copy 16RenMov 17MkDir 18Delete 19FKey 20Quit

```

Edit "FIND" window line as you wish. For example, input such wildcard mask (for cancel Find operation press VTfm *escape* <KP0> key)

```

SYS$SYSROOT: [SYSMGR]*.*:*
/NETSCAPE.DIR; 1
ACCOUNTNG.DAT; 1
CLUE$HISTORY.DATA; 1
CLUE$LAST_INFORT.LIS; 1
DCE_OUT0000011B.TMP; 1
DCE_OUT0000011C.TMP; 1
DECNET_REGISTER_IMPORT_FILE_INFORT.TX
SYS$SYSDEVICE: [UOVA.INFO-ZIP]*.*:*
..
UNZIP.EXE; 1
ZIP.EXE; 1
ZIPCLOAK.EXE; 1
ZIPNOTE.EXE; 1
ZIPSPLIT.EXE; 1
ZIP_CLI.EXE; 1
FIND
amd*.*:*
DTSS$ERROR.LOG; 105
DTSS$ERROR.LOG; 104
DTSS$ERROR.LOG; 103
DTSS$ERROR.LOG; 102
DTSS$ERROR.LOG; 101
DTSS$ERROR.LOG; 100
/SUB-DIR/ 25-12-2003 23:59:53 /UP-DIR/ 10-08-2004 02:53:39
(UTfm)INFORT::UOVA>
11GotoUMS 12GotoDir 13View 14Edit 15Copy 16RenMov 17MkDir 18Delete 19FKey 20Quit

```

After pressing <Return> (<Enter>) key you will see the new panel content

```

SYS$SYSROOT: [SYSMGR]amd*.*:*
AMDS$DRIVER_ACCESS.DAT; 3
AMDS$DRIVER_ACCESS.DAT; 2
AMDS$DRIVER_ACCESS.TEMPLATE; 3
AMDS$DRIVER_ACCESS.TEMPLATE; 2
AMDS$LOGICALS.COM; 3
AMDS$LOGICALS.COM; 2
AMDS$LOGICALS.TEMPLATE; 3
AMDS$LOGICALS.TEMPLATE; 2
AMDS$SYSTARTUP.TEMPLATE; 1
9 blocks 16-12-1998 13:48:03
SYS$SYSDEVICE: [UOVA.INFO-ZIP]*.*:*
..
UNZIP.EXE; 1
ZIP.EXE; 1
ZIPCLOAK.EXE; 1
ZIPNOTE.EXE; 1
ZIPSPLIT.EXE; 1
ZIP_CLI.EXE; 1
/UP-DIR/ 10-08-2004 02:53:39
(UTfm)INFORT::UOVA>
11GotoUMS 12GotoDir 13View 14Edit 15Copy 16RenMov 17MkDir 18Delete 19FKey 20Quit

```

Note that *panel header* shows the new wildcard mask.

### 3.10 Select <Ins>, <Sel> (selecting files in panels)

You can select files in panel for further operations (for example, Copy, Rename, Move or Delete). There are *manual* selection and selection by *wildcard mask*. For *manual* selection of current file simply press <Ins> key. The result of that is appearing of asterisk "\*" symbol in the first position of the current file line

|                                  |                                      |
|----------------------------------|--------------------------------------|
| SYS\$SYSROOT: [SYSMGR] amd*. *.* | SYS\$SYSDEVICE: [UOVA.INFO-ZIP]*.*.* |
| AMDS\$DRIVER_ACCESS.DAT; 3       | ..                                   |
| *AMDS\$DRIVER_ACCESS.DAT; 2      | UNZIP.EXE; 1                         |
| AMDS\$DRIVER_ACCESS.TEMPLATE; 3  | ZIP.EXE; 1                           |
| *AMDS\$DRIVER_ACCESS.TEMPLATE; 2 | ZIPCLOAK.EXE; 1                      |
| AMDS\$LOGICALS.COM; 3            | ZIPNOTE.EXE; 1                       |
| *AMDS\$LOGICALS.COM; 2           | ZIPSPPLIT.EXE; 1                     |
| AMDS\$LOGICALS.TEMPLATE; 3       | ZIP_CLI.EXE; 1                       |
| *AMDS\$LOGICALS.TEMPLATE; 2      |                                      |
| AMDS\$SYSTARTUP.TEMPLATE; 1      |                                      |
| 4 files selected                 | /UP-DIR/ 10-08-2004 02:53:39         |

(Utm)INFOR::DECC> █

11GotoUMS 12GotoDir 13View 14Edit 15Copy 16RenMov 17MkDir 18Delete 19FKey 20Quit

For wildcard mask selection press <Sel> key and you will see "SELECT" window with *current* panel selection wildcard mask

|                                  |                                      |
|----------------------------------|--------------------------------------|
| SYS\$SYSROOT: [SYSMGR] amd*. *.* | SYS\$SYSDEVICE: [UOVA.INFO-ZIP]*.*.* |
| AMDS\$DRIVER_ACCESS.DAT; 3       | ..                                   |
| *AMDS\$DRIVER_ACCESS.DAT; 2      | UNZIP.EXE; 1                         |
| AMDS\$DRIVER_ACCESS.TEMPLATE; 3  | ZIP.EXE; 1                           |
| *AMDS\$DRIVER_ACCESS.TEMPLATE; 2 | ZIPCLOAK.EXE; 1                      |
| AMDS\$LOGICALS.COM; 3            | ZIPNOTE.EXE; 1                       |
| *AMDS\$LOGICALS.COM; 2           | ZIPSPPLIT.EXE; 1                     |
| AMDS\$LOGICALS.TEMPLATE; 3       | ZIP_CLI.EXE; 1                       |
| SELECT                           |                                      |
| *.*.*                            |                                      |
| 4 files selected                 | /UP-DIR/ 10-08-2004 02:53:39         |

(Utm)INFOR::DECC>

11GotoUMS 12GotoDir 13View 14Edit 15Copy 16RenMov 17MkDir 18Delete 19FKey 20Quit



Edit "SELECT" window line as you wish. For example, input such wildcard mask (for cancel Select operation press VTfm escape <KP0> key)

```

SYS$SYSROOT: [SYSMGR] amd*. *.*
AMDS$DRIVER_ACCESS.DAT; 3
*AMDS$DRIVER_ACCESS.DAT; 2
AMDS$DRIVER_ACCESS.TEMPLATE; 3
*AMDS$DRIVER_ACCESS.TEMPLATE; 2
AMDS$LOGICALS.COM; 3
*AMDS$LOGICALS.COM; 2
AMDS$LOGICALS.TEMPLATE; 3
SYS$SYSDEVICE: [UOVA.INFO-ZIP]*.*.*
..
UNZIP.EXE; 1
ZIP.EXE; 1
ZIPCLOAK.EXE; 1
ZIPNOTE.EXE; 1
ZIPSPLIT.EXE; 1
ZIP_CLI.EXE; 1
SELECT
*.*L;*
4 files selected      /UP-DIR/      10-08-2004 02:53:39
(UTfm)INFOR::DECC>
11GotoUMS 12GotoDir 13View 14Edit 15Copy 16RenMov 17MkDir 18Delete 19FKey 20Quit

```

After pressing <Return> (<Enter>) key you will see the following screen

```

SYS$SYSROOT: [SYSMGR] amd*. *.*
AMDS$DRIVER_ACCESS.DAT; 3
*AMDS$DRIVER_ACCESS.DAT; 2
AMDS$DRIVER_ACCESS.TEMPLATE; 3
*AMDS$DRIVER_ACCESS.TEMPLATE; 2
AMDS$LOGICALS.COM; 3
*AMDS$LOGICALS.COM; 2
AMDS$LOGICALS.TEMPLATE; 3
*AMDS$LOGICALS.TEMPLATE; 2
*AMDS$SYSTARTUP.TEMPLATE; 1
SYS$SYSDEVICE: [UOVA.INFO-ZIP]*.*.*
..
UNZIP.EXE; 1
ZIP.EXE; 1
ZIPCLOAK.EXE; 1
ZIPNOTE.EXE; 1
ZIPSPLIT.EXE; 1
ZIP_CLI.EXE; 1
7 files selected      /UP-DIR/      10-08-2004 02:53:39
(UTfm)INFOR::DECC>
11GotoUMS 12GotoDir 13View 14Edit 15Copy 16RenMov 17MkDir 18Delete 19FKey 20Quit

```

### 3.11 UnSelect <Ins>, <Rem> (unselecting files in panels)

The UnSelect operation is similar to Select one. Also there are *manual* unselection and unselection by *wildcard mask*. For *manual* unselection of the current *previously selected* file simply press <Ins> key. The result of that is *disappearing* of asterisk "\*" symbol in the first position of the current file line

|   |   |
|---|---|
| SYS\$SYSROOT: [SYSMGR] amd*. *.* *  | SYS\$SYSDEVICE: [UOVA.INFO-ZIP]*. *.* *   |
| <pre> AMDS\$DRIVER_ACCESS.DAT; 3 *AMDS\$DRIVER_ACCESS.DAT; 2 AMDS\$DRIVER_ACCESS.TEMPLATE; 3 *AMDS\$DRIVER_ACCESS.TEMPLATE; 2 AMDS\$LOGICALS.COM; 3 *AMDS\$LOGICALS.COM; 2 AMDS\$LOGICALS.TEMPLATE; 3 *AMDS\$LOGICALS.TEMPLATE; 2 *AMDS\$SYSTARTUP.TEMPLATE; 1         </pre> | <pre> .. UNZIP.EXE; 1 ZIP.EXE; 1 ZIPCLOAK.EXE; 1 ZIPNOTE.EXE; 1 ZIPSPLIT.EXE; 1 ZIP_CLI.EXE; 1         </pre> |
| 5 files selected  | /UP-DIR/ 10-08-2004 02:53:39  |
| (Utm)INFORT::DECC>  |   |
| 11GotoUMS 12GotoDir 13View 14Edit 15Copy 16RenMov 17MkDir 18Delete 19FKey 20Quit  |   |

For wildcard mask unselection press <Rem> key and you will see "UNSELECT" window with *current* panel selection wildcard mask

|  |   |
|--|---|
| SYS\$SYSROOT: [SYSMGR] amd*. *.* *   | SYS\$SYSDEVICE: [UOVA.INFO-ZIP]*. *.* *   |
| <pre> AMDS\$DRIVER_ACCESS.DAT; 3 *AMDS\$DRIVER_ACCESS.DAT; 2 AMDS\$DRIVER_ACCESS.TEMPLATE; 3 *AMDS\$DRIVER_ACCESS.TEMPLATE; 2 AMDS\$LOGICALS.COM; 3 *AMDS\$LOGICALS.COM; 2 AMDS\$LOGICALS.TEMPLATE; 3         </pre> | <pre> .. UNZIP.EXE; 1 ZIP.EXE; 1 ZIPCLOAK.EXE; 1 ZIPNOTE.EXE; 1 ZIPSPLIT.EXE; 1 ZIP_CLI.EXE; 1         </pre> |
| UNSELECT   |   |
| *.*L*.*  |   |
| 5 files selected   | /UP-DIR/ 10-08-2004 02:53:39  |
| (Utm)INFORT::DECC>   |   |
| 11GotoUMS 12GotoDir 13View 14Edit 15Copy 16RenMov 17MkDir 18Delete 19FKey 20Quit   |   |

Edit "UNSELECT" window line as you wish. For example, input such wildcard mask (for cancel UnSelect operation press VTfm *escape* <KP0> key)

```

SYS$SYSROOT: [SYSMGR] amd*. *.*
AMDS$DRIVER_ACCESS.DAT; 3
*AMDS$DRIVER_ACCESS.DAT; 2
AMDS$DRIVER_ACCESS.TEMPLATE; 3
*AMDS$DRIVER_ACCESS.TEMPLATE; 2
AMDS$LOGICALS.COM; 3
*AMDS$LOGICALS.COM; 2
AMDS$LOGICALS.TEMPLATE; 3
SYS$SYSDEVICE: [UOVA.INFO-ZIP]*.*.*
..
UNZIP.EXE; 1
ZIP.EXE; 1
ZIPCLOAK.EXE; 1
ZIPNOTE.EXE; 1
ZIPSPLIT.EXE; 1
ZIP_CLI.EXE; 1
UNSELECT
*.*; 2
5 files selected
/UP-DIR/ 10-08-2004 02:53:39
(UTfm)INFOR::DECC>
11GotoVMS 12GotoDir 13View 14Edit 15Copy 16RenMov 17MkDir 18Delete 19FKey 20Quit

```

After pressing <Return> (<Enter>) key you will see the following screen

```

SYS$SYSROOT: [SYSMGR] amd*. *.*
AMDS$DRIVER_ACCESS.DAT; 3
AMDS$DRIVER_ACCESS.DAT; 2
AMDS$DRIVER_ACCESS.TEMPLATE; 3
AMDS$DRIVER_ACCESS.TEMPLATE; 2
AMDS$LOGICALS.COM; 3
AMDS$LOGICALS.COM; 2
AMDS$LOGICALS.TEMPLATE; 3
AMDS$LOGICALS.TEMPLATE; 2
*AMDS$SYSTARTUP.TEMPLATE; 1
SYS$SYSDEVICE: [UOVA.INFO-ZIP]*.*.*
..
UNZIP.EXE; 1
ZIP.EXE; 1
ZIPCLOAK.EXE; 1
ZIPNOTE.EXE; 1
ZIPSPLIT.EXE; 1
ZIP_CLI.EXE; 1
1 file selected
/UP-DIR/ 10-08-2004 02:53:39
(UTfm)INFOR::DECC>
11GotoVMS 12GotoDir 13View 14Edit 15Copy 16RenMov 17MkDir 18Delete 19FKey 20Quit

```

### 3.12 Copy <Help> (copy a current or selected files)

With the Copy operation you can copy directories with their contents (*directory trees*), individual files or both. If there are *selected* directories or files then VTfm copies these, but if there are *no selected* directories or files then VTfm copies *current* one. On the next screen there are one selected directory and one individual file

```
SYS$SYSDEVICE: [UOVA.DECC.UTFM]*.*:*
..
*/A.DIR; 1
/B.DIR; 1
/SRC.DIR; 1
FSPEC_PT.OBJ; 1
README.TXT; 26
SAVE_UTFM.C; 5
*SP2.EXE; 3
UTED.TPU; 1
UTFM.COM; 15
UTFM.UAX_EXE; 285

95 blocks      22-12-2004 15:58:08

DUB0: [UOVA]*.*:*
No files found

/ROOT-DIR/

(UTfm)INFORT::DECC>
11GotoUMS 12GotoDir 13View 14Edit 15Copy 16RenMov 17MkDir 18Delete 19FKey 20Quit
```

When you press <Help> key you will see the following “COPY” window (for cancel Copy operation press VTfm *escape* <KP0> key)

```
SYS$SYSDEVICE: [UOVA.DECC.UTFM]*.*:*
..
*/A.DIR; 1
/B.DIR; 1
/SRC.DIR; 1
FSPEC_PT.OBJ; 1
README.TXT; 26
SAVE_UTFM.C; 5

COPY 2 SELECTED FILES TO

DUB0: [UOVA]*.*:*

95 blocks      22-12-2004 15:58:08

/ROOT-DIR/

(UTfm)INFORT::DECC>
11GotoUMS 12GotoDir 13View 14Edit 15Copy 16RenMov 17MkDir 18Delete 19FKey 20Quit
```

By default VTfm assumes that copy operation will be to the directory in the opposite panel. But you can edit “COPY” window line as you wish. For example, you can input

```

SYS$SYSDEVICE: [UOVA.DECC.UTFM]*.*;*
DUB0: [UOVA]*.*;*
..
*/A.DIR;1
*/B.DIR;1
*/SRC.DIR;1
FSPEC_PT.OBJ;1
README.TXT;26
SAVE_UTFM.C;5
No files found

COPY 2 SELECTED FILES TO
sys$manager:*. *.*

95 blocks      22-12-2004 15:58:08      /ROOT-DIR/

(UTfm)INFOR: :DECC>
11GotoUMS 12GotoDir 13View 14Edit 15Copy 16RenMov 17MkDir 18Delete 19FKey 20Quit

```

But return to the previous screen

```

SYS$SYSDEVICE: [UOVA.DECC.UTFM]*.*;*
DUB0: [UOVA]*.*;*
..
*/A.DIR;1
*/B.DIR;1
*/SRC.DIR;1
FSPEC_PT.OBJ;1
README.TXT;26
SAVE_UTFM.C;5
No files found

COPY 2 SELECTED FILES TO
DUB0: [UOVA]*.*;*

95 blocks      22-12-2004 15:58:08      /ROOT-DIR/

(UTfm)INFOR: :DECC>
11GotoUMS 12GotoDir 13View 14Edit 15Copy 16RenMov 17MkDir 18Delete 19FKey 20Quit

```

To execute the Copy operation press <Return> (<Enter>) key. VTfm shows the “COPYING...” window with specifications of copying files and copy progress bar

```

SYS$SYSDEVICE: [UOVA.DECC.UTFM]*.*;*
DUB0: [UOVA]*.*;*
..
*/A.DIR;1
/B.DIR;1
/SRC.DIR;1
FSPEC_PT.OBJ;1
README.TXT;26
SAVE_UTFM.C;5
No files found

COPYING...

SP2.EXE;3
%%%%%%%%%%%%%%%%%%%%%%%%%%%%%%%%%%%%%%%%%%%%%%%%%%%%%%%%%%%%%%%%%%%%%%%%

95 blocks      22-12-2004 15:58:08      /ROOT-DIR/

(UTfm)INFOR::DECC>
11GotoUMS 12GotoDir 13View 14Edit 15Copy 16RenMov 17MkDir 18Delete 19FKey 20Quit

```

As a result of Copy operation you see such screen

```

SYS$SYSDEVICE: [UOVA.DECC.UTFM]*.*;*
DUB0: [UOVA]*.*;*
..
/A.DIR;1
/B.DIR;1
/SRC.DIR;1
FSPEC_PT.OBJ;1
README.TXT;26
SAVE_UTFM.C;5
SP2.EXE;3
UTED.TPU;1
UTFM.COM;15
UTFM.UAX_EXE;285
/A.DIR;1
SP2.EXE;3

95 blocks      22-12-2004 15:58:08      /SUB-DIR/      7-01-2005 17:55:39

(UTfm)INFOR::DECC>
11GotoUMS 12GotoDir 13View 14Edit 15Copy 16RenMov 17MkDir 18Delete 19FKey 20Quit

```

### 3.13 RenMov <Do> (rename/move a current or selected files)

The RenMov operation is similar to Copy one. The only difference is that *source files will be deleted*. Move to directory file B.DIR;1, enter into subdirectory B by pressing <Return> (<Enter>) key and switch to right panel by pressing <Tab> key. Then select all files in the panel

```
SYS$SYSDEVICE: [UOVA.DECC.UTFM.B]*.*;* ..No files found
DUB0: [UOVA]*.*;*
*/A.DIR;1
*SP2.EXE;3

/UP-DIR/ 1-01-2005 08:44:17 532750 blocks 7-01-2005 17:55:42
(UTfm)INFORT::DECC>
11GotoUMS 12GotoDir 13View 14Edit 15Copy 16RenMov 17MkDir 18Delete 19FKey 20Quit
```

To RenMov selected files to the left panel press <Do> key. Now you see the “RENAME OR MOVE” window (for cancel RenMov operation press VTfm *escape* <KP0> key)

```
SYS$SYSDEVICE: [UOVA.DECC.UTFM.B]*.*;*
DUB0: [UOVA]*.*;*
*/A.DIR;1
*SP2.EXE;3

RENAME OR MOVE 2 SELECTED FILES TO
SYS$SYSDEVICE: [UOVA.DECC.UTFM.B]*.*;*

/UP-DIR/ 1-01-2005 08:44:17 532750 blocks 7-01-2005 17:55:42
(UTfm)INFORT::DECC>
11GotoUMS 12GotoDir 13View 14Edit 15Copy 16RenMov 17MkDir 18Delete 19FKey 20Quit
```

To execute the RenMov operation press <Return> (<Enter>) key. VTfm shows the “RENAMING OR MOVING...” window with specifications of renaming/moving files

```

SYS$SYSDEVICE: [UOVA.DECC.UTFM.B]*.*:*
..No files found
DUB0: [UOVA]*.*:*
*/A.DIR;1
*SP2.EXE;3
----- RENAMING OR MOVING... -----
SP2.EXE;3
%%%%%%%%%%%%%%
/UP-DIR/      1-01-2005 08:44:17      532750 blocks      7-01-2005 17:55:42
(UTfm)INFORT::DECC>
11GotoUMS 12GotoDir 13View 14Edit 15Copy 16RenMov 17MkDir 18Delete 19FKey 20Quit

```

**Note**

If source and destination *physical* disk drives are *different* then VTfm rename/move files via copying them. This is true for our example.

As a result of RenMov operation you see such screen

```

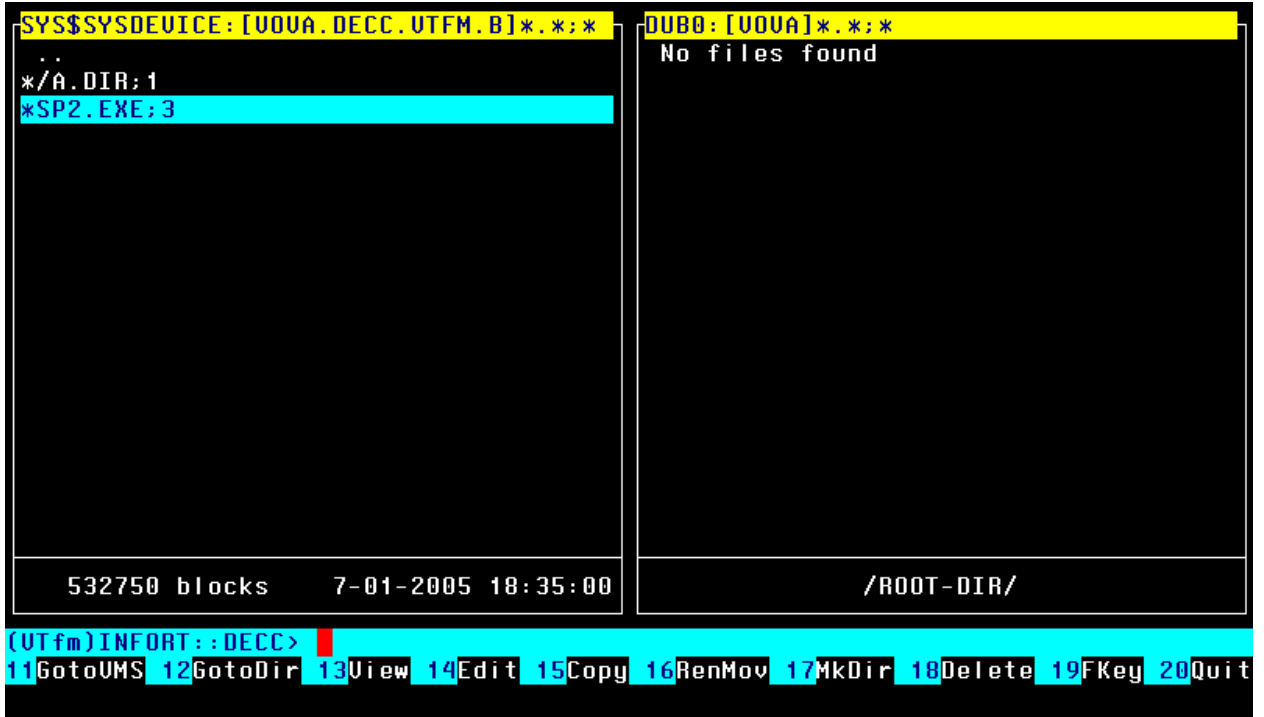
SYS$SYSDEVICE: [UOVA.DECC.UTFM.B]*.*:*
DUB0: [UOVA]*.*:*
No files found
..
/A.DIR;1
SP2.EXE;3
/UP-DIR/      1-01-2005 08:44:17      /ROOT-DIR/
(UTfm)INFORT::DECC>
11GotoUMS 12GotoDir 13View 14Edit 15Copy 16RenMov 17MkDir 18Delete 19FKey 20Quit

```

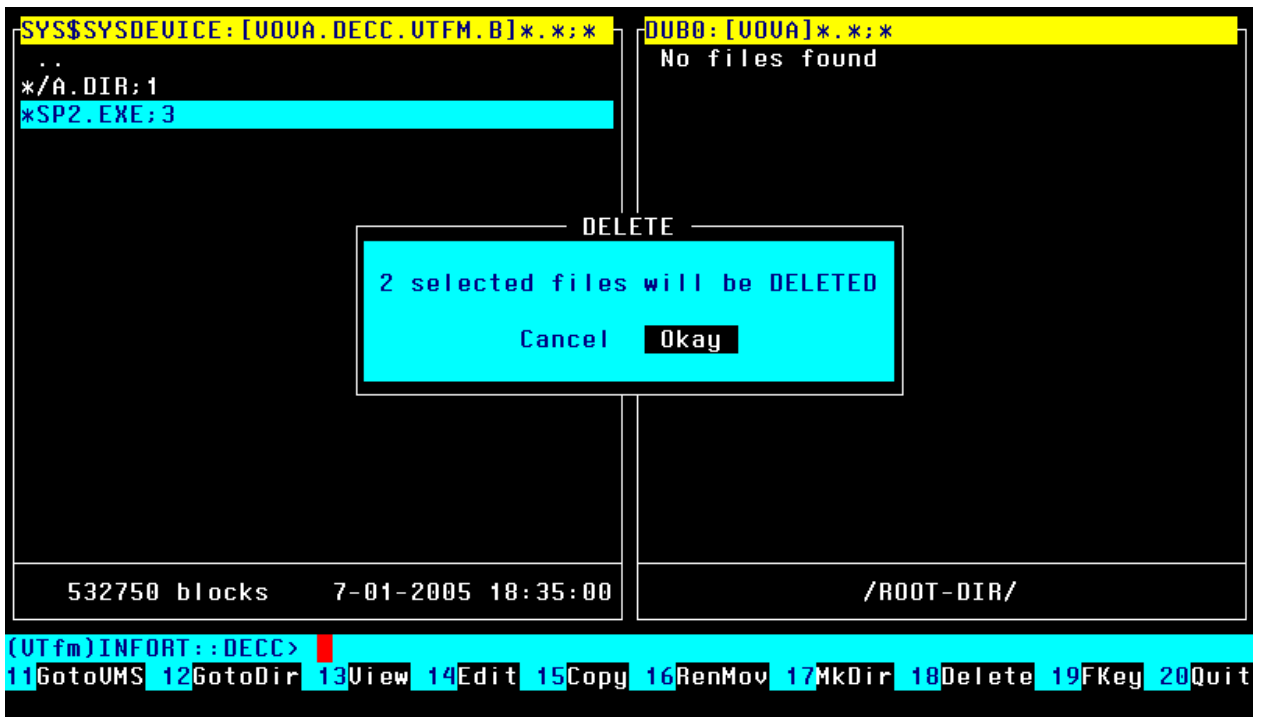


### 3.14 Delete <F18> (delete a current or selected files)

With the Delete operation you can delete directories with their contents (*directory trees*), individual files or both. If there are *selected* directories or files then VTfm deletes these, but if there are *no selected* directories or files then VTfm deletes *current* one. Switch to left panel by pressing <Tab> key and select all files in the panel



To delete selected files press <F18> key. You will see the “DELETE” window in which you can select “Okay” item by pressing *Left/Right* arrow, *Up/Down* arrow, <Tab> or <Backspace> keys (for cancel Delete operation press VTfm *escape* <KP0> key)



Now press <Return> (<Enter>) key. VTfm shows “DELETING...” window with specifications of deleting files

```

SYS$SYSDEVICE: [UOVA, DECC, UTM, B]*.*:*
*/A.DIR; 1
*SP2.EXE; 3

DUB0: [UOVA]*.*:*
No files found

DELETING...

[.A]
UTFM.C; 509

532750 blocks    7-01-2005 20:31:33    /ROOT-DIR/

(UTfm)INFORT::DECC>
11GotoUMS 12GotoDir 13View 14Edit 15Copy 16RenMov 17Mkdir 18Delete 19FKey 20Quit

```

When all files deleted you will see such screen

```

SYS$SYSDEVICE: [UOVA, DECC, UTM, B]*.*:*
..No files found

DUB0: [UOVA]*.*:*
No files found

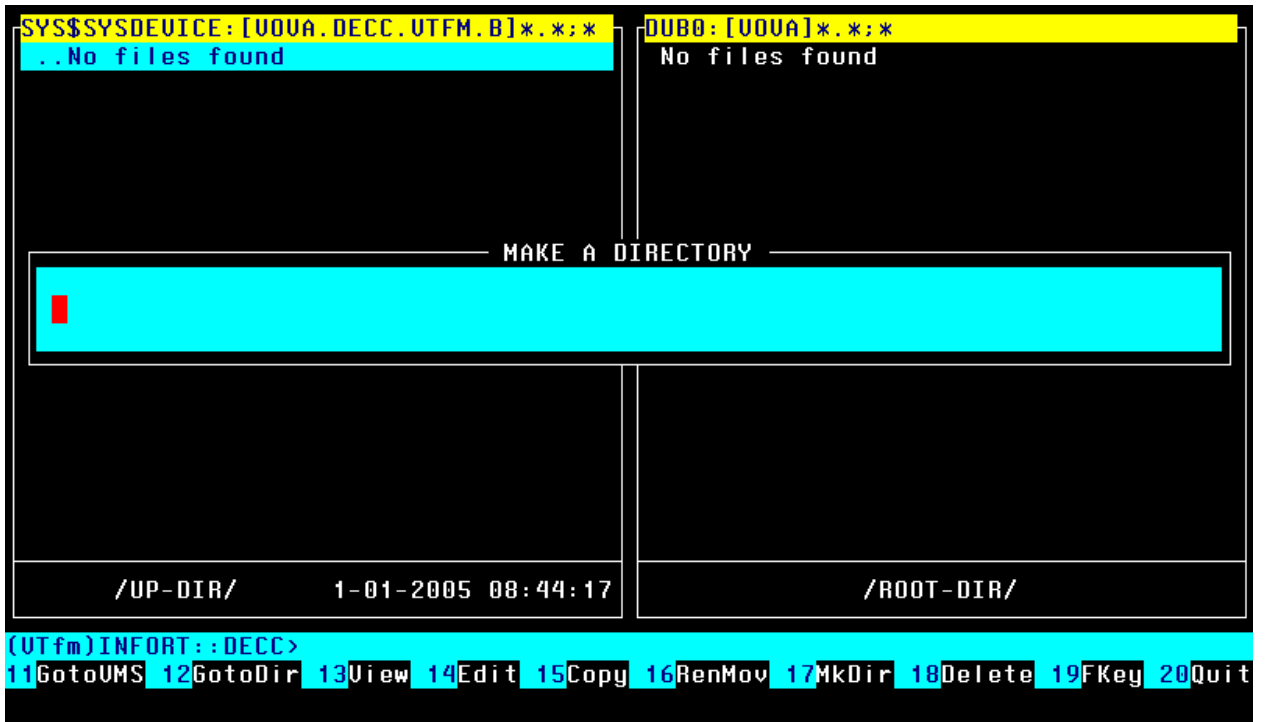
/UP-DIR/    1-01-2005 08:44:17    /ROOT-DIR/

(UTfm)INFORT::DECC>
11GotoUMS 12GotoDir 13View 14Edit 15Copy 16RenMov 17Mkdir 18Delete 19FKey 20Quit

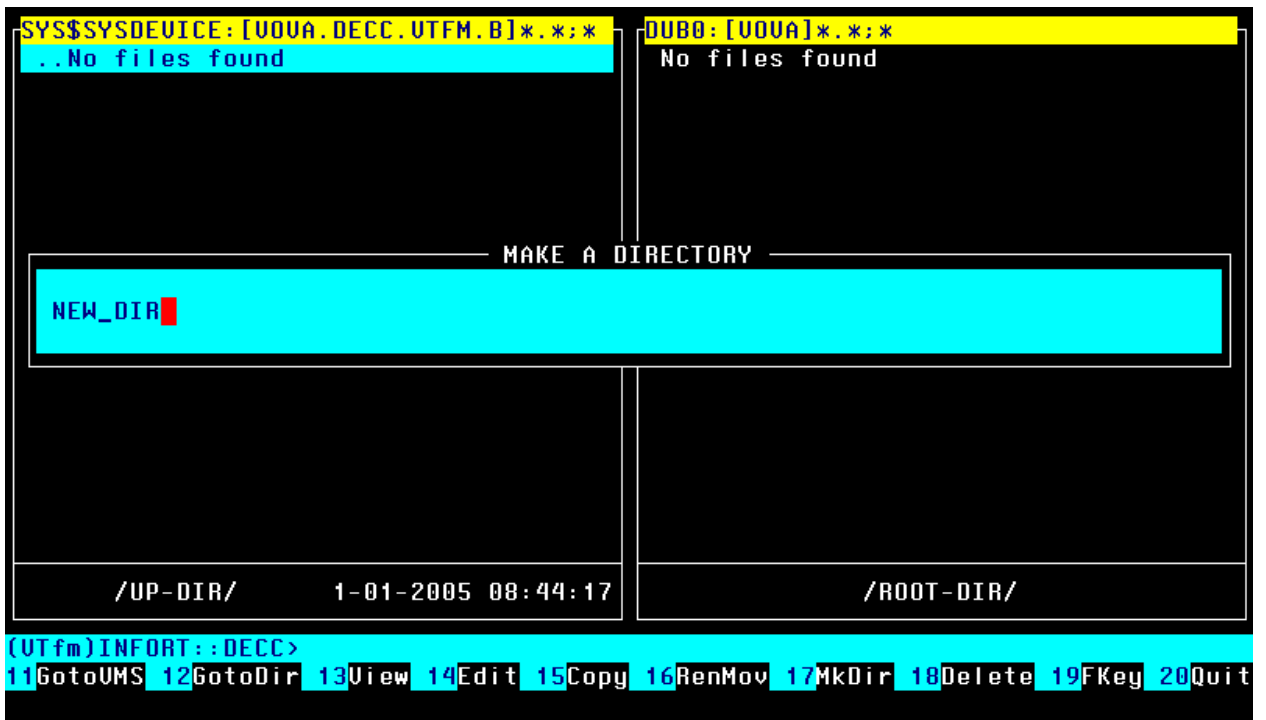
```

### 3.15 Mkdir <F17> (make a subdirectory)

For make (create) a new *subdirectory* simply press <F17> key. VTfm shows the “MAKE A DIRECTORY” window



Input *name* of the new subdirectory (for cancel Mkdir operation press VTfm *escape* <KP0> key)



To make a subdirectory NEW\_DIR press <Return> (<Enter>) key and you will see such screen (note that VTfm file bar *highlights the new subdirectory* file NEW\_DIR.DIR;1)

```
SYS$SYSDEVICE: [UOVA. DECC. UTM. B]*.*:*
..
/NEW_DIR.DIR;1

DUB0: [UOVA]*.*:*
No files found

/SUB-DIR/      7-01-2005 20:48:10      /ROOT-DIR/

(UTfm)INFORT::DECC>
11GotoUMS 12GotoDir 13View 14Edit 15Copy 16RenMov 17MkDir 18Delete 19FKey 20Quit
```

### 3.16 Quit <F20> (quit VTfm)

For quit VTfm press <F20> key. You will see the “QUIT” window

```
SYS$SYSDEVICE: [UOVA. DECC. UTM. B]*.*:*
..
/NEW_DIR.DIR;1

DUB0: [UOVA]*.*:*
No files found

QUIT

Do you really want to quit the UTfm session?
  Yes  No

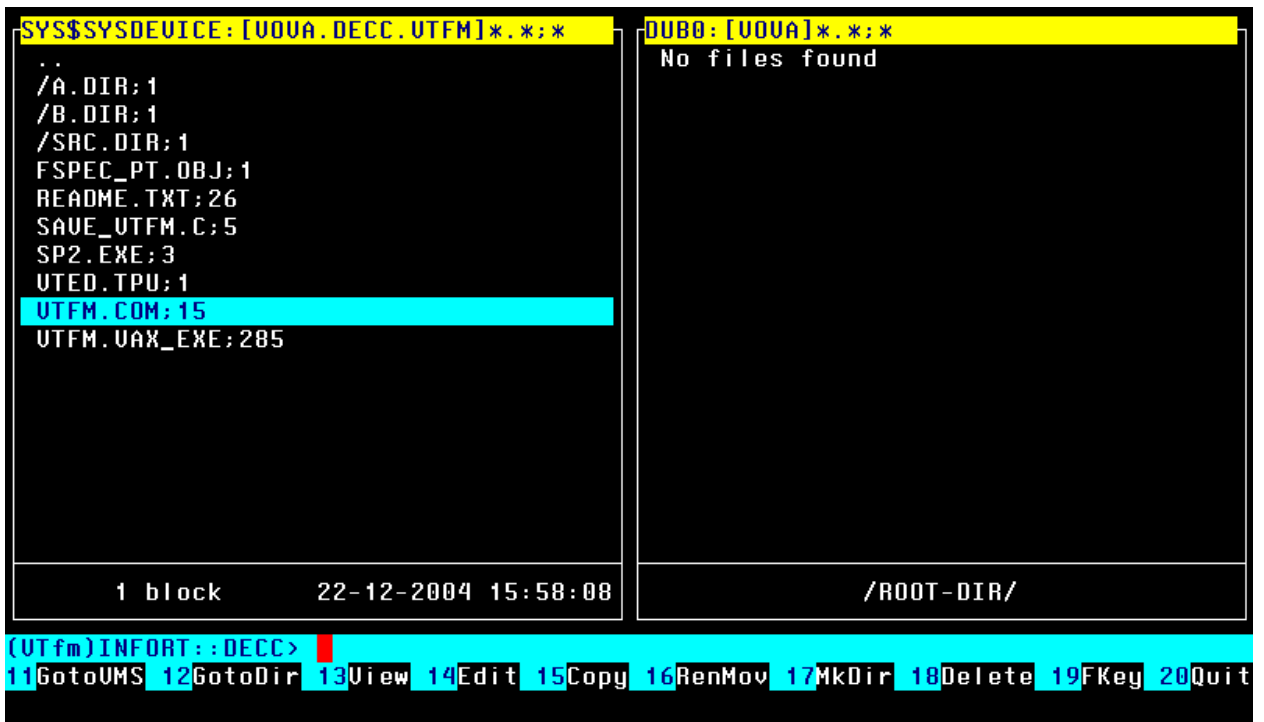
/SUB-DIR/      7-01-2005 20:48:10      /ROOT-DIR/

(UTfm)INFORT::DECC>
11GotoUMS 12GotoDir 13View 14Edit 15Copy 16RenMov 17MkDir 18Delete 19FKey 20Quit
```

Select item you wish (i.e. “Yes” or “No”) by pressing *Left/Right* arrow, *Up/Down* arrow, <Tab> or <Backspace> keys and press <Return> (<Enter>) key (for cancel Quit operation press VTfm escape <KP0> key).

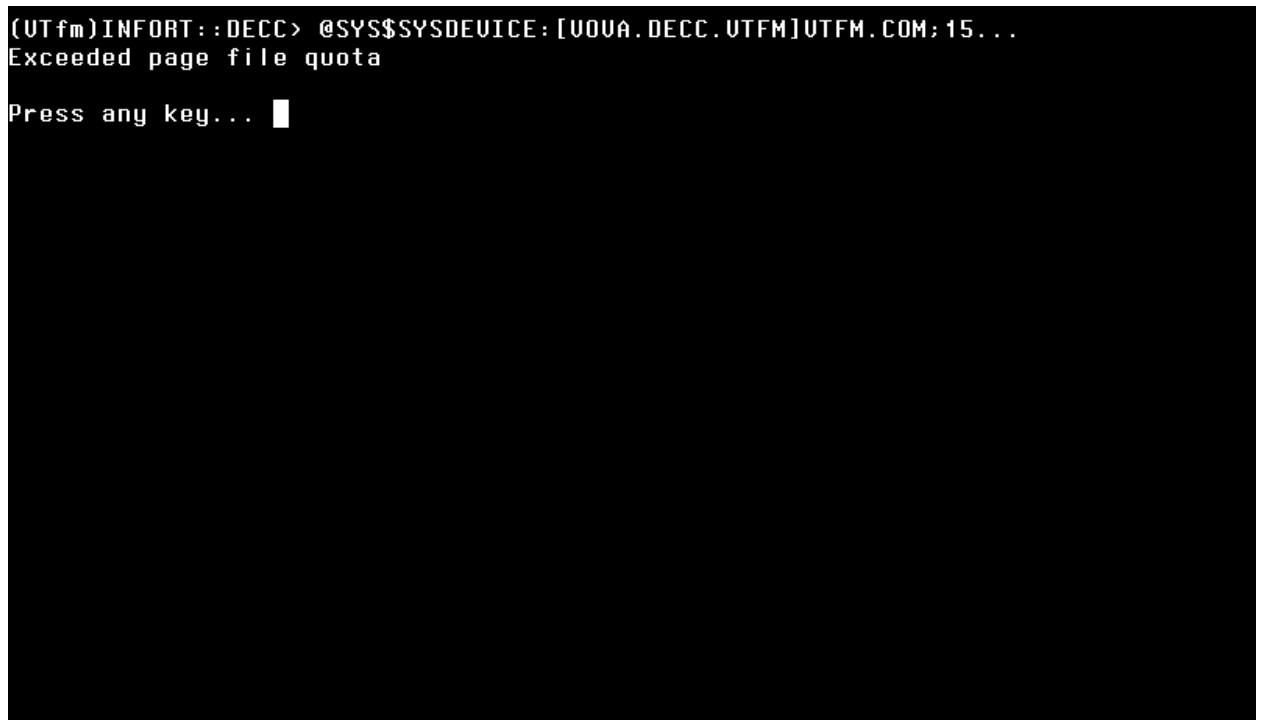
### 3.17 Execute COM and EXE files

As in the Norton Commander you can execute COM or EXE file by moving to it



The screenshot shows the Norton Commander interface with two panels. The left panel displays a directory listing for the path SYS\$SYSDEVICE:[UOVA.DECC.UTFM]\*.\*:\* with files like /A.DIR;1, /B.DIR;1, /SRC.DIR;1, FSPEC\_PT.OBJ;1, README.TXT;26, SAVE\_UTFM.C;5, SP2.EXE;3, UTED.TPU;1, UTFM.COM;15 (highlighted), and UTFM.UAX\_EXE;285. The right panel shows DUB0:[UOVA]\*.\*:\* with 'No files found'. A menu bar at the bottom lists options: 11GotoUMS, 12GotoDir, 13View, 14Edit, 15Copy, 16RenMov, 17MkDir, 18Delete, 19FKey, 20Quit. The status bar shows '1 block' and '22-12-2004 15:58:08' on the left, and '/ROOT-DIR/' on the right.

Now simply press <Return> (<Enter>) key. VTfm creates a subprocess in which COM file will be executed (this technique is also true for every \*.\*COM;\* or \*.\*EXE;\* file)



The screenshot shows a terminal window with the command (UfM)INFORT::DECC> @SYS\$SYSDEVICE:[UOVA.DECC.UTFM]UTFM.COM;15... and the output Exceeded page file quota. Below the output, it says Press any key... followed by a cursor.

#### Note

If you receive a message about *exceeded quota* then *increase Pqflquo* quota for your account.

### 3.18 Working with command line

You can use VTfm command line as ordinary OpenVMS one. For example, input the following OpenVMS “PURGE” command

```
SYSSYSDEVICE: [UOQA.DECC.UTFM.A]*.*;*
..
FSPEC_PT.ALPHA_MAR;1
FSPEC_PT.IA64_MAR;1
FSPEC_PT.UAX_MAR;1
NOTES.TXT;1
UTFM.C;516
UTFM.C;515
UTFM.C;514
UTFM.C;513
UTFM.C;512
UTFM.C;511
UTFM.C;510
UTFM.C;509
UTFM.C;508
UTFM.C;507
UTFM.C;506
UTFM.C;505

/UP-DIR/      1-01-2005 08:19:34

DUB0: [UOQA]*.*;*
No files found

/ROOT-DIR/

(UTfm)INFORT::DECC> pu/ke:3
11GotoUMS 12GotoDir 13View 14Edit 15Copy 16RenMov 17MkDir 18Delete 19FKey 20Quit
```

For execute this command press <Return> (<Enter>) key. VTfm creates a subprocess in which this command will be executed

```
(UTfm)INFORT::DECC> pu/ke:3...
Press any key... █
```

#### Note

If you receive a message about *exceeded quota* then *increase PgfIquo* quota for your account.

After pressing some key you will see such screen

```
SYS$SYSDEVICE: [UOVA, DECC, UTFM, A]*.*;*
..
FSPEC_PT.ALPHA_MAR; 1
FSPEC_PT.IA64_MAR; 1
FSPEC_PT.UAX_MAR; 1
NOTES.TXT; 1
UTFM.C; 516
UTFM.C; 515
UTFM.C; 514

/UP-DIR/      1-01-2005 08:19:34

DUB0: [UOVA]*.*;*
No files found

/ROOT-DIR/

(UTfm)INfort::DECC>
11GotoUMS 12GotoDir 13View 14Edit 15Copy 16RenMov 17MkDir 18Delete 19FKey 20Quit
```

Now press <Return> (<Enter>) key for return into up-subdirectory A and move to the file SP2.EXE;3

```
SYS$SYSDEVICE: [UOVA, DECC, UTFM]*.*;*
..
/A.DIR; 1
/B.DIR; 1
/SRC.DIR; 1
FSPEC_PT.OBJ; 1
FSPEC_PT.UAX_OBJ; 1
README.TXT; 26
SAVE_UTFM.C; 5
SP2.EXE; 3
UTED.TPU; 1
UTFM.COM; 15
UTFM.UAX_EXE; 285

532750 blocks      7-11-2004 00:27:36

DUB0: [UOVA]*.*;*
No files found

/ROOT-DIR/

(UTfm)INfort::DECC>
11GotoUMS 12GotoDir 13View 14Edit 15Copy 16RenMov 17MkDir 18Delete 19FKey 20Quit
```

Input the following OpenVMS "DIR" command

```
SYS$SYSDEVICE: [UOVA.DECC.UTFM]*.*;*
..
/A.DIR;1
/B.DIR;1
/SRC.DIR;1
FSPEC_PT.OBJ;1
FSPEC_PT.UAX_OBJ;1
README.TXT;26
SAVE_UTFM.C;5
SP2.EXE;3
UTED.TPU;1
UTFM.COM;15
UTFM.UAX_EXE;285
532750 blocks      7-11-2004 00:27:36

DUB0: [UOVA]*.*;*
No files found
/ROOT-DIR/

(Utfm)INFOR::DECC> dir/fu
11GotoUMS 12GotoDir 13View 14Edit 15Copy 16RenMov 17MkDir 18Delete 19FKey 20Quit
```

If you press ^D (Directory) key now then VTfm *insert to the current position* of the command line the *directory specification of current panel*

```
SYS$SYSDEVICE: [UOVA.DECC.UTFM]*.*;*
..
/A.DIR;1
/B.DIR;1
/SRC.DIR;1
FSPEC_PT.OBJ;1
FSPEC_PT.UAX_OBJ;1
README.TXT;26
SAVE_UTFM.C;5
SP2.EXE;3
UTED.TPU;1
UTFM.COM;15
UTFM.UAX_EXE;285
532750 blocks      7-11-2004 00:27:36

DUB0: [UOVA]*.*;*
No files found
/ROOT-DIR/

(Utfm)INFOR::DECC> dir/fu SYS$SYSDEVICE: [UOVA.DECC.UTFM]
11GotoUMS 12GotoDir 13View 14Edit 15Copy 16RenMov 17MkDir 18Delete 19FKey 20Quit
```



Moreover, by pressing ^F (File) key you can *insert to the current position* of the command line the *file specification of current file* (with trailing space “ “ symbol)

```

SYS$SYSDEVICE: [UOVA.DECC.UTFM]*.*;*
..
/A.DIR;1
/B.DIR;1
/SRC.DIR;1
FSPEC_PT.OBJ;1
FSPEC_PT.UAX_OBJ;1
README.TXT;26
SAVE_UTFM.C;5
SP2.EXE;3
UTED.TPU;1
UTFM.COM;15
UTFM.UAX_EXE;285
532750 blocks      7-11-2004 00:27:36

DUB0: [UOVA]*.*;*
No files found
/ROOT-DIR/

(Utfm)INFOR::DECC> dir/fu SYS$SYSDEVICE: [UOVA.DECC.UTFM]SP2.EXE;3
11GotoUMS 12GotoDir 13View 14Edit 15Copy 16RenMov 17Mkdir 18Delete 19FKey 20Quit

```

For execute this command press <Return> (<Enter>) key. VTfm creates a subprocess in which this command will be executed

```

SP2.EXE;3          File ID: (5590,13,0)
Size:             532750/532755      Owner: [VERSH,UOVA]
Created:         7-NOV-2004 00:27:36.95
Revised:        3-JAN-2005 23:42:33.65 (2)
Expires:        <None specified>
Backup:         <No backup recorded>
Effective:      <None specified>
Recording:      <None specified>
File organization: Sequential
Shelved state:  Online
Caching attribute: Writethrough
File attributes: Allocation: 532755, Extend: 0, Global buffer count: 0
                  No version limit
Record format:  Fixed length 512 byte records
Record attributes: None
RMS attributes: None
Journaling enabled: None
File protection: System:RWED, Owner:RWED, Group:RE, World:
Access Cntrl List: None
Client attributes: None

Total of 1 file, 532750/532755 blocks.

Press any key... █

```

### Note

If you receive a message about *exceeded quota* then *increase Pqflq* quota for your account.

After pressing some key you return to VTfm panels screen with empty command line

```

SYS$SYSDEVICE: [UOVA.DECC.UTFM]*.*;*
..
/A.DIR;1
/B.DIR;1
/SRC.DIR;1
FSPEC_PT.OBJ;1
FSPEC_PT.UAX_OBJ;1
README.TXT;26
SAVE_UTFM.C;5
SP2.EXE;3
UTED.TPU;1
UTFM.COM;15
UTFM.UAX_EXE;285
532750 blocks    7-11-2004 00:27:36

DUB0: [UOVA]*.*;*
No files found
/ROOT-DIR/

(UTfm)INFOR: :DECC>
11GotoUMS 12GotoDir 13View 14Edit 15Copy 16RenMov 17MkDir 18Delete 19FKey 20Quit

```

If you want to go to the previous “PURGE” command then twice press ^V (preVious command) key. You will see

```

SYS$SYSDEVICE: [UOVA.DECC.UTFM]*.*;*
..
/A.DIR;1
/B.DIR;1
/SRC.DIR;1
FSPEC_PT.OBJ;1
FSPEC_PT.UAX_OBJ;1
README.TXT;26
SAVE_UTFM.C;5
SP2.EXE;3
UTED.TPU;1
UTFM.COM;15
UTFM.UAX_EXE;285
532750 blocks    7-11-2004 00:27:36

DUB0: [UOVA]*.*;*
No files found
/ROOT-DIR/

(UTfm)INFOR: :DECC> pu/ke:3
11GotoUMS 12GotoDir 13View 14Edit 15Copy 16RenMov 17MkDir 18Delete 19FKey 20Quit

```

But if you press ^N (Next command) key now then you go to “DIR” command

```
SYSSYSDEVICE: [UOVA.DECC.UTFM]*.*:*
..
/A.DIR;1
/B.DIR;1
/SRC.DIR;1
FSPEC_PT.OBJ;1
FSPEC_PT.UAX_OBJ;1
README.TXT;26
SAVE_UTFM.C;5
SP2.EXE;3
UTED.TPU;1
UTFM.COM;15
UTFM.UAX_EXE;285

532750 blocks 7-11-2004 00:27:36

DUB0: [UOVA]*.*:*
No files found

/ROOT-DIR/

(Ufm)INFORT::DECC> dir/fu SYSSYSDEVICE: [UOVA.DECC.UTFM]SP2.EXE;3
11GotoUMS 12GotoDir 13View 14Edit 15Copy 16RenMov 17MkDir 18Delete 19FKey 20Quit
```

### 3.19 Environment file

When exit VTfm creates environment file **SYSSLOGIN:ENVIRONMENT.DAT** for storing the following information:

- ✓ directory panels orientation (left/right or top/bottom);
- ✓ current directory panel (left/right/top/bottom);
- ✓ file size measure (blocks or bytes);
- ✓ disk device and directory specification (for each panel);
- ✓ filtering wildcard mask (for each panel);
- ✓ selection wildcard mask (for each panel);
- ✓ current file bar position (for each panel).

So, when you run VTfm again your last working environment will be restored! **Don't edit file SYSSLOGIN:ENVIRONMENT.DAT!** But if any problems with this file simply delete it.

## 4. VTfm customizing

### 4.1 Edit some parameters in source code

You can modify the values of the following constants in VTfm source code

- MAX\_COMM\_QUA - *maximum number of command lines (def is 64),*
- MAX\_COMM\_LEN - *maximum length of command line (def is 4096),*
- MAX\_DIR\_FQUA - *maximum number of files in directory panel (def is 8192),*
- REC\_BUFF\_SIZE - *I/O buffer size for file coping (def is 127 blocks)*

To do this edit file VTFM.C and modify values in the following lines

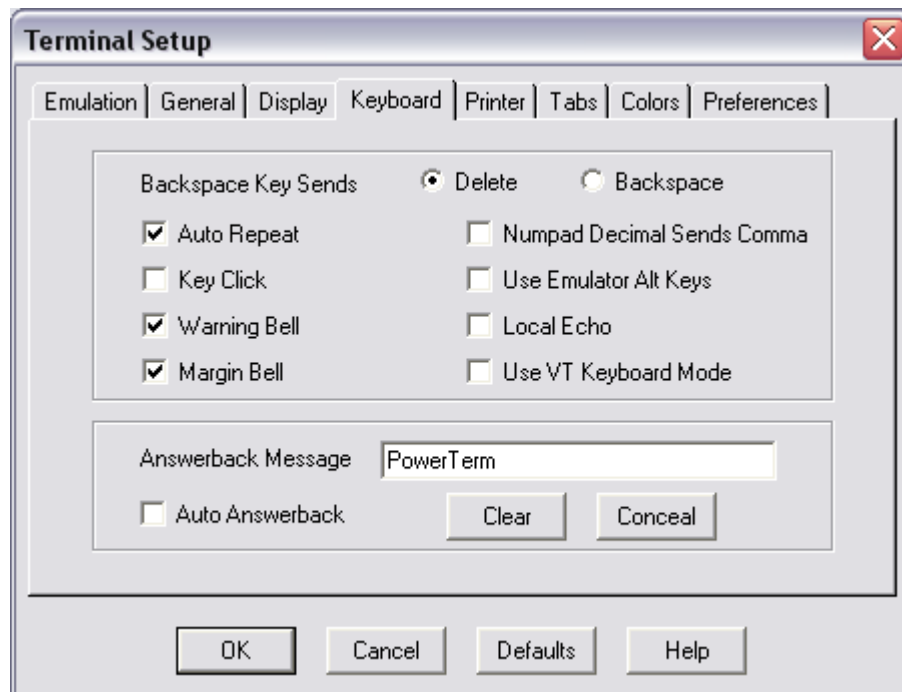
- #define MAX\_COMM\_QUA 64
- #define MAX\_COMM\_LEN 4096
- #define MAX\_DIR\_FQUA 8192
- #define REC\_BUFF\_SIZE 127

### 4.2 F1-F10 keys instead of F11-F20

The default VTfm operation keys for DEC VT-series terminals are F11-F20. But it is possible to use F1-F10 keys *on some keyboards* if run VTfm with "F1" argument:

```
$ VTFM F1
```

For example, if you use PowerTerm terminal emulator then *uncheck* "Use Emulator Alt Keys" in the PowerTerm "Terminal Setup" window



Remember that this VTfm feature is not guaranteed for hardware keyboards.

## 5. Development History

### *1991, July - First release 1.0 with name NCvtf.*

- ❑ developed on VAX C 3.0;
- ❑ supports VT-terminal modes with only 24x80 rows/columns;
- ❑ uses EDT\$EDIT routine for view and edit;
- ❑ works only on VAXVMS.

.  
.  
.

### *2004, August - Release 2.0-0 with name VTfm.*

- ❑ developed on DEC C v6.0;
- ❑ redesigned and reduced source code;
- ❑ supports VT-terminal modes with more than 24x80 rows/columns;
- ❑ uses TPU\$TPU routine for view and edit;
- ❑ works on VAX, Alpha and IA64 with OpenVMS.

### *Currently known restrictions:*

- ❑ does not accept node specification in GotoDir, Edit, Copy and RenMov operations (use VTfm command line instead in this cases);
- ❑ does not translate disk device logicals in RenMov operation, so if, for example, logicals XXX: and YYY: point to the SAME physical disk device VTfm RenMov files via copy;
- ❑ does not Copy directory files with their content (make destination directory first and then Copy source directory content);
- ❑ does not RenMov directory files with their content to ANOTHER logical or physical disk device (make destination directory first and then RenMov source directory content);
- ❑ does not open any archive files (use correspondent utility in VTfm command line).

### *2004, October - Release 2.2-6*

- ❑ Copy, RenMov and Delete DIRECTORY TREES;
- ❑ supports LOGICALS when GotoDir, Copy or RenMov (SYSS\$LOGIN, SYSS\$MANAGER, SYSS\$COMMON, SYSS\$COMMON:[SYSMGR] etc.);
- ❑ recognizes the same disk device with DIFFERENT logical names when RenMov, so if, for example, logicals XXX: and YYY: point to the SAME physical disk VTfm RenMov files WITHOUT copy;
- ❑ works on VAX, Alpha and IA64 with OpenVMS.

*Currently known restrictions:*

- ❑ supports only LOCAL or CLUSTERWIDE disk devices when GotoDir, Copy, RenMov or Delete (if need to use NODE specification use VTfm command line);
- ❑ does not support "\*", "%", "?", "[.", ".]", "[-", ".-" and "..." in DIRECTORY specification when GotoDir, Copy or RenMov;
- ❑ does not support EXTENDED FILE SPECIFICATIONS on ODS-5 volumes;
- ❑ does not open any archive files (use correspondent utility in VTfm command line).

**2004, October - Release 2.2-8**

- ❑ some changes and additions of function keys when input and edit lines (see also 19FKey description):
  - ✓ ^P - extract Previous command line (instead of ^E),
  - ✓ ^H - cursor to beg of line,
  - ✓ ^E - cursor to end of line,
  - ✓ ^U - delete chars from beg of line to current position;
- ❑ some minor bug fixes;
- ❑ works on VAX, Alpha and IA64 with OpenVMS.

*Currently known restrictions:*

- ❑ supports only LOCAL or CLUSTERWIDE disk devices when GotoDir, Copy, RenMov or Delete (if need to use NODE specification use VTfm command line);
- ❑ does not support "\*", "%", "?", "[.", ".]", "[-", ".-" and "..." in DIRECTORY specification when GotoDir, Copy or RenMov;
- ❑ does not support EXTENDED FILE SPECIFICATIONS on ODS-5 volumes;
- ❑ does not open any archive files (use correspondent utility in VTfm command line).

**2004, November - Release 2.2-9**

- ❑ speed up Copy operation more than 3 times (127 blocks size of I/O buffer);
- ❑ change ^P function key (extract Previous command line) to ^V (extract preVious command line) for use VTfm on Console terminal;
- ❑ works on VAX, Alpha and IA64 with OpenVMS.

*Currently known restrictions:*

- ❑ supports only LOCAL or CLUSTERWIDE disk devices when GotoDir, Copy, RenMov or Delete (if need to use NODE specification use VTfm command line);
- ❑ does not support "\*", "%", "?", "[.", ".]", "[-", ".-" and "..." in DIRECTORY specification when GotoDir, Copy or RenMov;
- ❑ does not support EXTENDED FILE SPECIFICATIONS on ODS-5 volumes;
- ❑ does not open any archive files (use correspondent utility in VTfm command line).

### ***2004, November - Release 2.2-A***

- ❑ supports possibility of using F1-F10 keys on some keyboards instead of default F11-F20 keys (use "f1" argument when run VTfm);
- ❑ some bug fixes;
- ❑ works on VAX, Alpha and IA64 with OpenVMS.

#### *Currently known restrictions:*

- ❑ supports only LOCAL or CLUSTERWIDE disk devices when GotoDir, Copy, RenMov or Delete (if need to use NODE specification use VTfm command line);
- ❑ does not support "\*", "%", "?", "[.", ".]", "[-", ".-" and "..." in DIRECTORY specification when GotoDir, Copy or RenMov;
- ❑ does not support EXTENDED FILE SPECIFICATIONS on ODS-5 volumes;
- ❑ does not open any archive files (use correspondent utility in VTfm command line).

### ***2005, January - Release 2.3-2***

- ❑ first release with support of EXTENDED FILE SPECIFICATIONS on ODS-5 volumes;
- ❑ command line is up to 4K chars;
- ❑ some bug fixes;
- ❑ works on VAX, Alpha and IA64 with OpenVMS.

#### *Currently known restrictions:*

- ❑ supports only LOCAL or CLUSTERWIDE disk devices when GotoDir, Copy, RenMov or Delete (if need to use NODE specification use VTfm command line);
- ❑ does not support "\*", "%", "?", "[.", ".]", "[-", ".-" and "..." in DIRECTORY specification when GotoDir, Copy or RenMov;
- ❑ does not open any archive files (use correspondent utility in VTfm command line).

### ***2005, March - Release 2.3-4***

- ❑ fix bug concerning incorrect display of file size in bytes when it more than 4GB;
- ❑ some bug fixes concerning long file names;
- ❑ works on VAX, Alpha and IA64 with OpenVMS.

#### *Currently known restrictions:*

- ❑ supports only LOCAL or CLUSTERWIDE disk devices when GotoDir, Copy, RenMov or Delete (if need to use NODE specification use VTfm command line);
- ❑ does not support "\*", "%", "?", "[.", ".]", "[-", ".-" and "..." in DIRECTORY specification when GotoDir, Copy or RenMov;
- ❑ does not open any archive files (use correspondent utility in VTfm command line).

### ***2005, March - Release 2.3-7***

- ❑ improved overall performance;
- ❑ dynamic memory allocation for directory panels and command strings;
- ❑ more accurate code concerning the circumflex symbol (^) in file and directory specifications (in particular concerning the Unicode chars);
- ❑ works on VAX, Alpha and IA64 with OpenVMS.

Currently known restrictions:

- ❑ supports only LOCAL or CLUSTERWIDE disk devices when GotoDir, Copy, RenMov or Delete (if need to use NODE specification use VTfm command line);
- ❑ does not support "\*", "%", "?", "[.", ".]", "[-", ".-" and "..." in DIRECTORY specification when GotoDir, Copy or RenMov;
- ❑ does not open any archive files (use correspondent utility in VTfm command line).

### ***2005, March - Release 2.3-8***

- ❑ environment file SYSS\$LOGIN:VTFM\$ENVIRONMENT.DAT added for storing the following information when exit VTfm:
  - ✓ directory panels orientation (left/right or top/bottom);
  - ✓ current directory panel (left/right/top/bottom);
  - ✓ file size measure (blocks or bytes);
  - ✓ disk device and directory specification (for each panel);
  - ✓ filtering wildcard mask (for each panel);
  - ✓ selection wildcard mask (for each panel);
  - ✓ current file bar position (for each panel);
- ❑ some minor bug fixes;
- ❑ works on VAX, Alpha and IA64 with OpenVMS.

Currently known restrictions:

- ❑ supports only LOCAL or CLUSTERWIDE disk devices when GotoDir, Copy, RenMov or Delete (if need to use NODE specification use VTfm command line);
- ❑ does not support "\*", "%", "?", "[.", ".]", "[-", ".-" and "..." in DIRECTORY specification when GotoDir, Copy or RenMov;
- ❑ does not open any archive files (use correspondent utility in VTfm command line).



### ***2005, April - Release 2.3-9***

- some more enhancements concerning Find, Select and UnSelect functions:
  - ✓ possibility of using zero or negative version numbers in wildcard masks (such as \*.\*;0 or \*.\*;-2 e.t.c.);
  - ✓ VTfm shows now the number of selected files in file statistics line;
  - ✓ VTfm switch OFF the Select (Sel) key when ALL files in directory panel are selected;
  - ✓ VTfm switch OFF the Unselect (Rem) key when there are NO selected files in directory panel;
- some minor bug fixes;
- works on VAX, Alpha and IA64 with OpenVMS.

Currently known restrictions:

- supports only LOCAL or CLUSTERWIDE disk devices when GotoDir, Copy, RenMov or Delete (if need to use NODE specification use VTfm command line);
- does not support "\*", "%", "?", "[.", ".]", "[-", ".-" and "..." in DIRECTORY specification when GotoDir, Copy or RenMov;
- does not open any archive files (use correspondent utility in VTfm command line).

### ***2005, April - Release 2.3-A***

- fix some bug concerning modification of Select function in VTfm release 2.3-9;
- works on VAX, Alpha and IA64 with OpenVMS.

Currently known restrictions:

- supports only LOCAL or CLUSTERWIDE disk devices when GotoDir, Copy, RenMov or Delete (if need to use NODE specification use VTfm command line);
- does not support "\*", "%", "?", "[.", ".]", "[-", ".-" and "..." in DIRECTORY specification when GotoDir, Copy or RenMov;
- does not open any archive files (use correspondent utility in VTfm command line).